

Catalog

Introduction	2
Chapter 1 Notice for use.....	3
1.1 The power supply security.....	3
1.2 Operation cautions.....	3
1.3 Location of the installation and usage environment	4
1.4 The ink is put and precautions for use	4
Chapter 2 Machine introduction and the preparations	5
2.1 Machine assemble.....	5
2.2 Head Installation.....	10
Chapter 3 Computer Setting and Software Installation.....	13
3.1 Starting up	13
3.2 Computer ID setting	13
3.3 Connect printer to computer	17
3.4 Maintop Installaton(Rip software)	18
3.5 Maintop Using	22
3.6 Calibration.....	26
3.7 Menu Introduction.....	30

Introduction

Dear customer thank you for your purchase and use of our company's products. Please be sure to read the instruction book before you use the product. It can help you quickly learn and skilled use of this product.

This instruction book can effectively help you to solve the problems in the process of installation and use. Please make sure to keep it, and put it in easy to find, in order to use again in the future.

This pictorial machine is a mechatronics device, There are both fine organization structure, and complicated electronic circuit system. Institutions in part with precision of the print head, in the process of moving and using slightly to avoid collision. To ensure that the work site clean and with no obvious dust around the machine. Part of the circuit has important CPU, memory and other sensitive electronic devices. When start up the machine must be connected to ground electrode to avoid electrostatic causing other malfunction. This equipment cannot be used in damp environment.

You are using the method of operation and maintenance process directly determines the pictorial machine's length of life, and machine's daily work. So once again remind you must read this manual carefully, operation, maintenance, maintenance as required. So as not to cause the machine can't leak ink, ink and other abnormal phenomenon occurred.

Chapter 1 Notice for use

1.1 The power supply security

- (1) Power: one-way communication 50Hz 220V or 110V AC($\pm 10\%$).
Maximum power machine : 2200W , print power 100W.
- (2) Only can use the printer in the label logo type of power supply .According to different countries and regions, may choose 110 v or 110 v ac power.
- (3) Will all of the devices connected to a properly grounded outlet, avoid the use of sockets and frequent switching between the on and off the equipment (e.g., duplicator, air conditioning system) in the same loop
- (4) Avoid the use of controlled by the switch on the wall or automatic timer socket.
- (5) Make your computer system away from potential interference sources , for example: the speaker or wireless phone stand.
- (6) Do not use damaged or broken power cord
- (7) If you use the additional power cord, bear in mind that the insertion of the additional power equipment total amperes do not exceed the rated amperage of the power supply, In addition, remember that the insertion of the all equipment on the wall to the total number of ampere don't exceed the amperage rating of the wall outlet.
- (8) Don't try to repair his pictorial machine, encounter problems please timely for pictorial machine maintenance and technical personnel
- (9) For man and machine safety, please do good earthed, specific requirements have installed staff informed
- (10) Can't charged printing line plug and pull the power cord, otherwise will causes the damage of the main board.

1.2 Operation cautions

- (1) Always turn off the power switch to using pictorial machine (pictorial machine on the right side of the rear power switch) . In front of the machine power supply has not been cut off, please don't take photo electrical source plug or unplug other related cable
- (2) Please do not put the machine tools or other items with the print platform or on flat, so as not to slow to clean up before the machine's operation cause unnecessary losses.
- (3) Before handling pictorial machine, please make sure you print the car has been fixed in initial position。
- (4) When print the picture, the paper machine(prevent become warped piece) must be used, in case of paper by partial and blowing nozzle.
- (5) Someone must watch when the machine work.(the machine must be operated by professional operators).
- (6) Encoder strip should be regularly check to see if clean and damaged, if dirty should use cotton swap dipped in alcohol to clean.
- (7) Guide should be regularly check to see if clean. It is recommended to use 1 to 2 months to be above the guide way butter (or parts of lubricating oil, etc.), decrease the slider friction.
- (8) Regularly check the maintenance station cleaning job.

- (9) Don't let the nozzle left under the maintenance station exposed to the air for a long time.
- (10) Abnormal shutdown condition. Do not manually pull the car quickly, should let its boot automatically back to the warehouse.
- (11) Regular maintenance of machine, reducing dust, the ink on the influence of the machine
- (12) Note: the machine must be connected to ground; When the dry air, static problem that not allow to ignore, when using some lamination and light medium, take electrostatic charge (especially when into the paper work soon). Electrostatic charge can lead to the machine and the card security is damaged, will take the ground wire is the only way to electrostatic discharge. Because the static power itself is a huge, so when charged the ink head operation, ensure that the hands have discharge (contact grounding metal body or wear in addition to electrostatic bracelet), otherwise easy to cause damage of the board and the nozzle.

1.3 Location of the installation and usage environment

- (1) Please make the pictorial machine in level, stability, and greater than pictorial machine in the plane. If pictorial machine tilt or have a certain Angle, the normal work of the machine could not be performed
- (2) To set aside enough space around the pictorial machine to ensure the normal ventilation of pictorial machine.
- (3) Make the printing machine be placed in close to the wall outlet in order to easy to plug not the place of the drastic change of temperature and humidity, easy to use pictorial machine. Avoid printer by direct sunlight, strong light or heat source.
- (4) Pictorial machine using temperature: 18 to 26 degrees Celsius; Humidity: 38% to 38%. To make the machine can run in the groove, please configure air conditioning and indoor temperature and humidity meter.
- (5) The machine must be far away from the noise source.

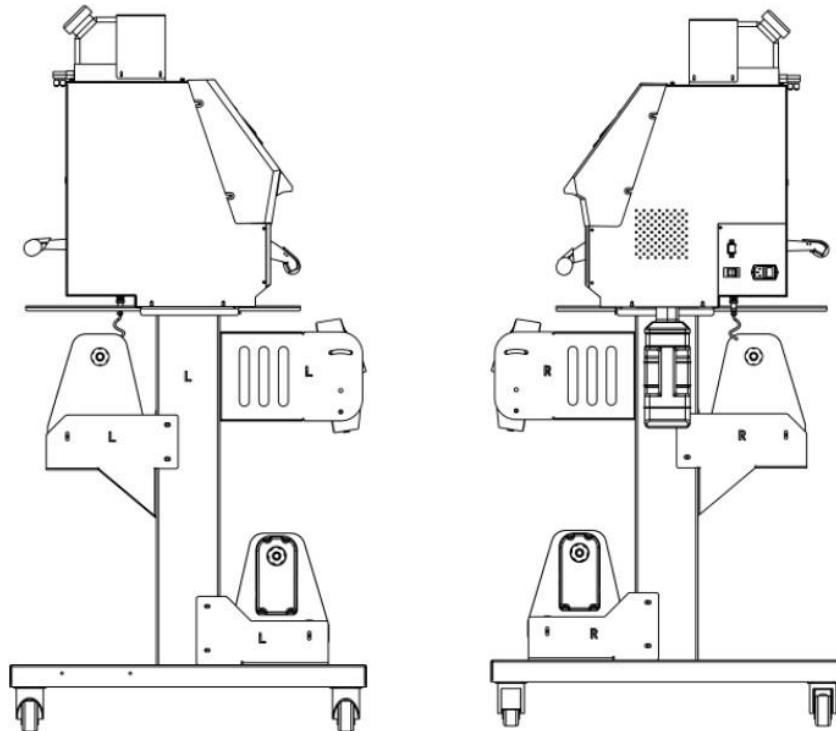
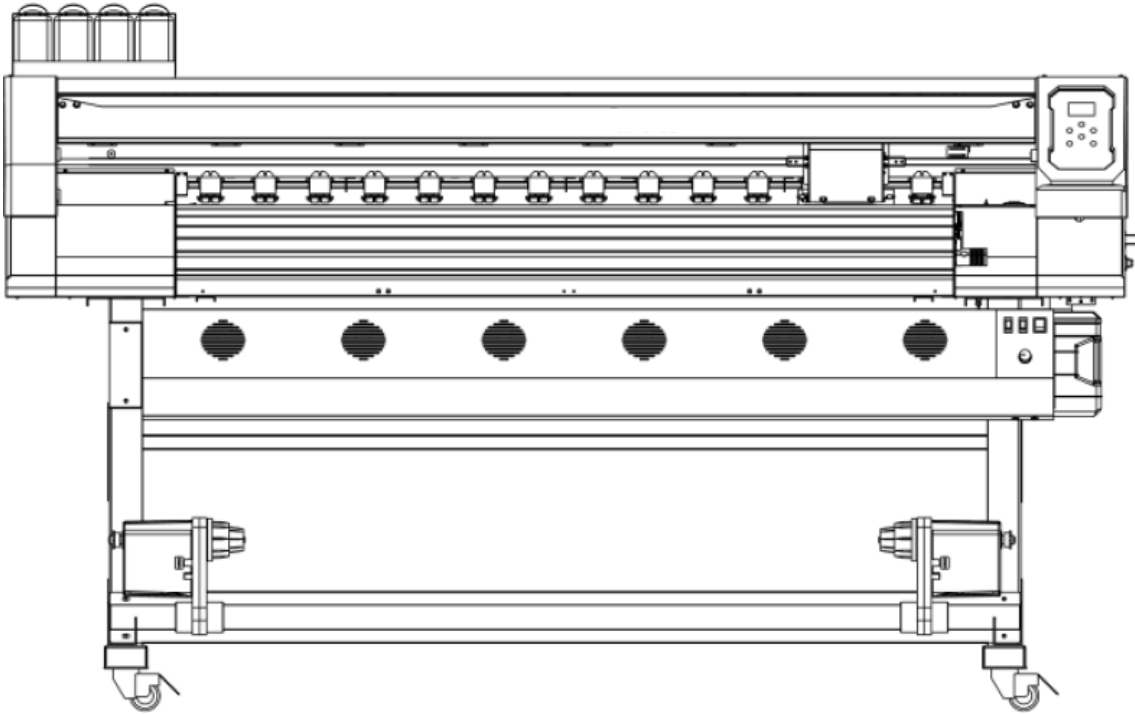
1.4 The ink is put and precautions for use

- (1) Please put the ink bottle at the children can't reach, don't let the kids drink ink cartridges or contact.
- (2) If the ink stick to the skin, please wash with soap and water .If the ink splash the eyes, immediately rinse off with clear water.
- (3) Don't shake the ink bottle, so as not to cause the ink leaks.
- (4) Ink bottle after using for a period of time (usually for two months), immediately take a thorough cleaning, and dry. Replace the ink bottle should pay attention to clean, to ensure the quality of printing. E, the ink should be placed a cool storage, avoid direct sunlight.

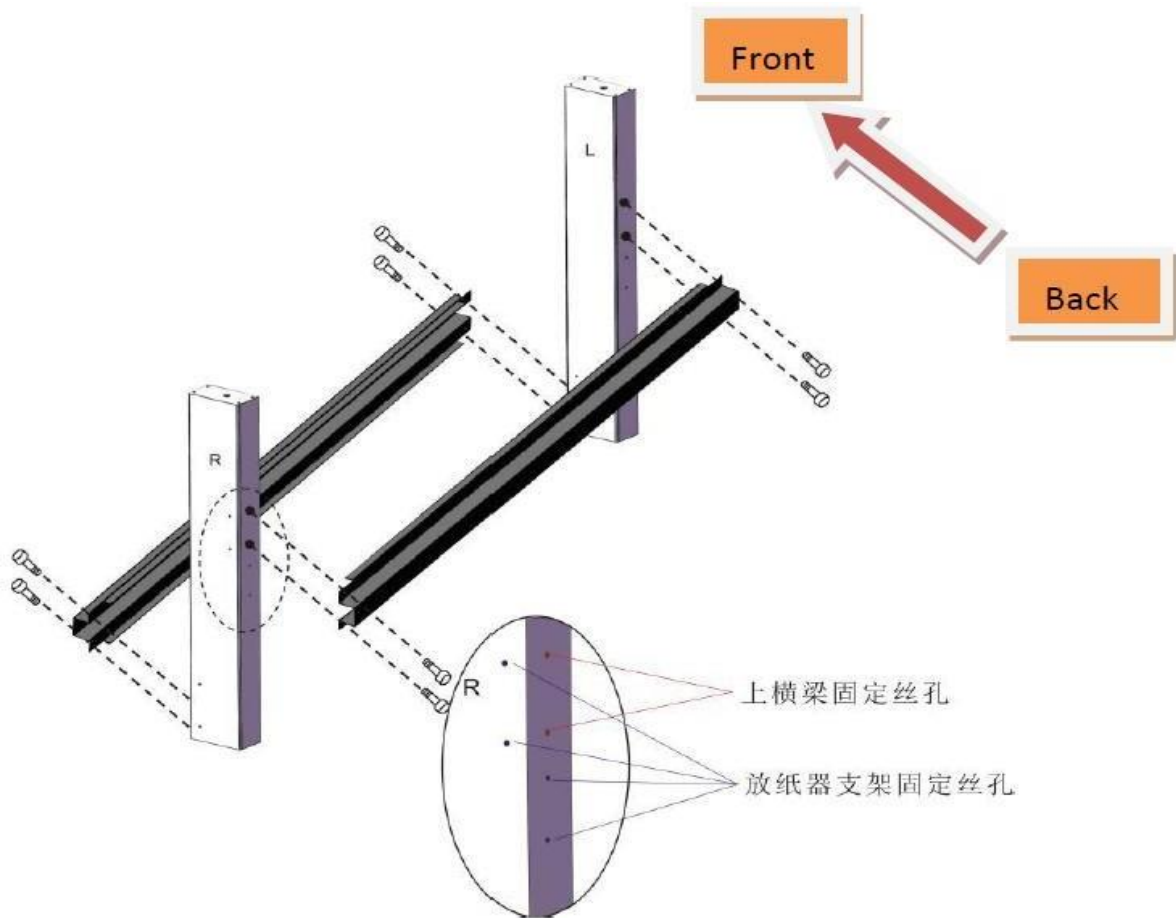
Chapter 2 Machine introduction and the preparations

2.1 Machine assemble

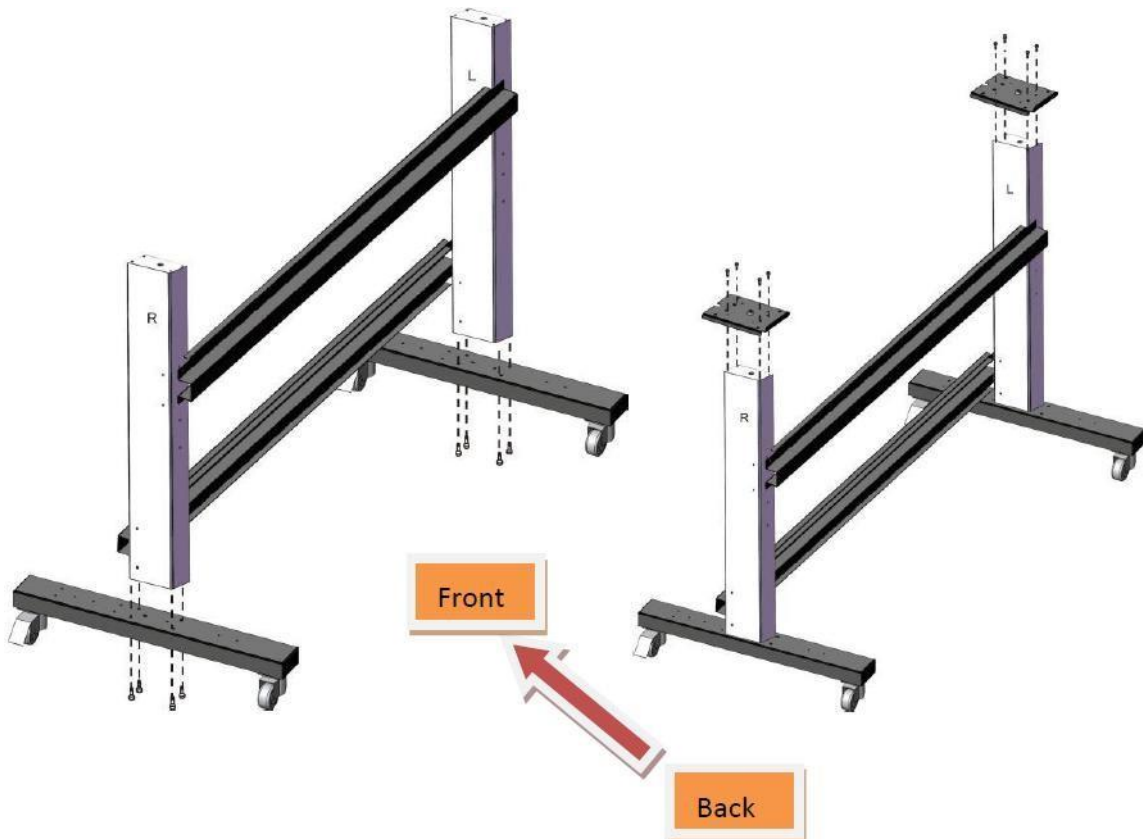
- (1) Open the packing of the machine, take out the machine parts, assemble respectively as shown in the figure below:



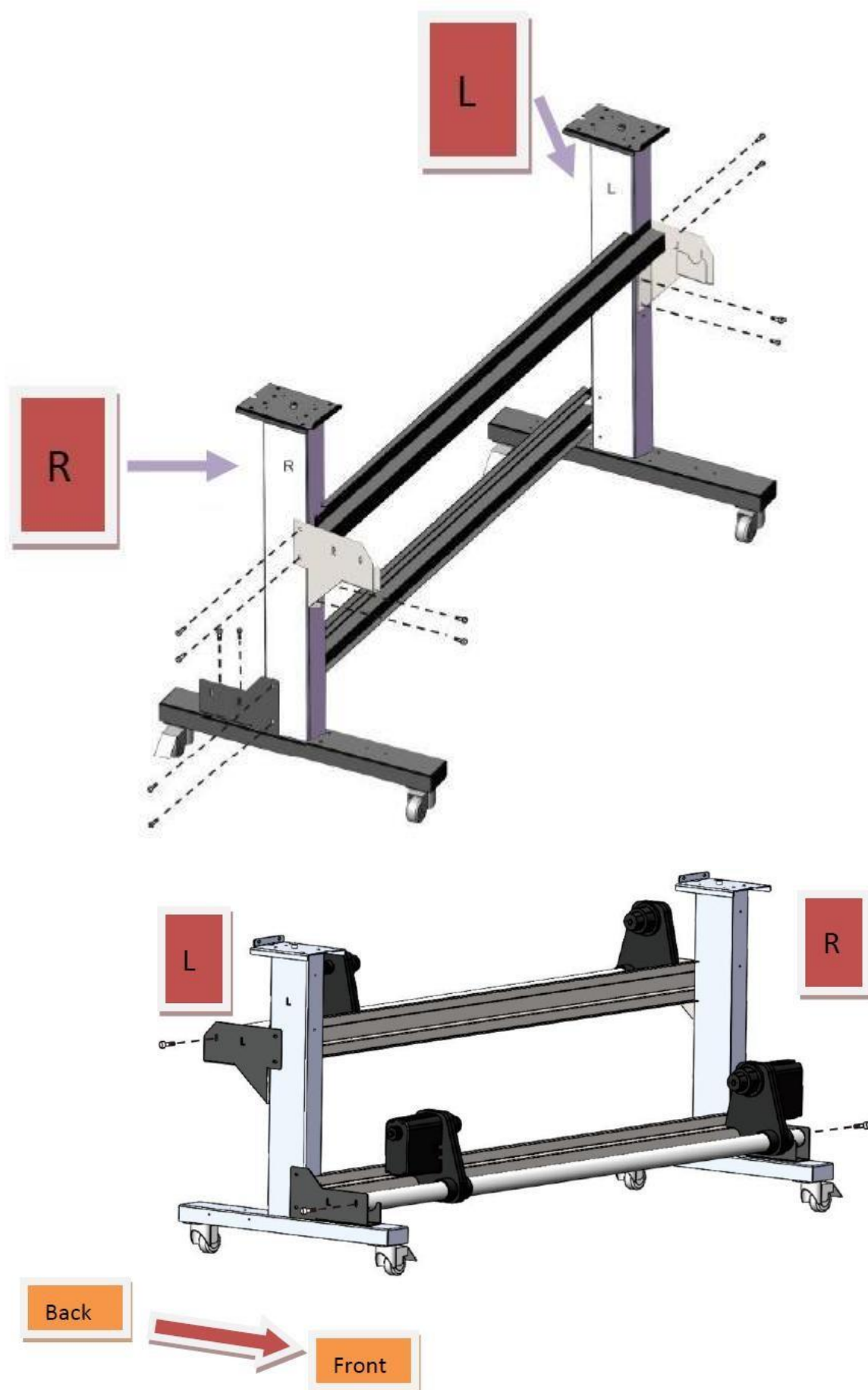
(2) Beam bar and legs installation



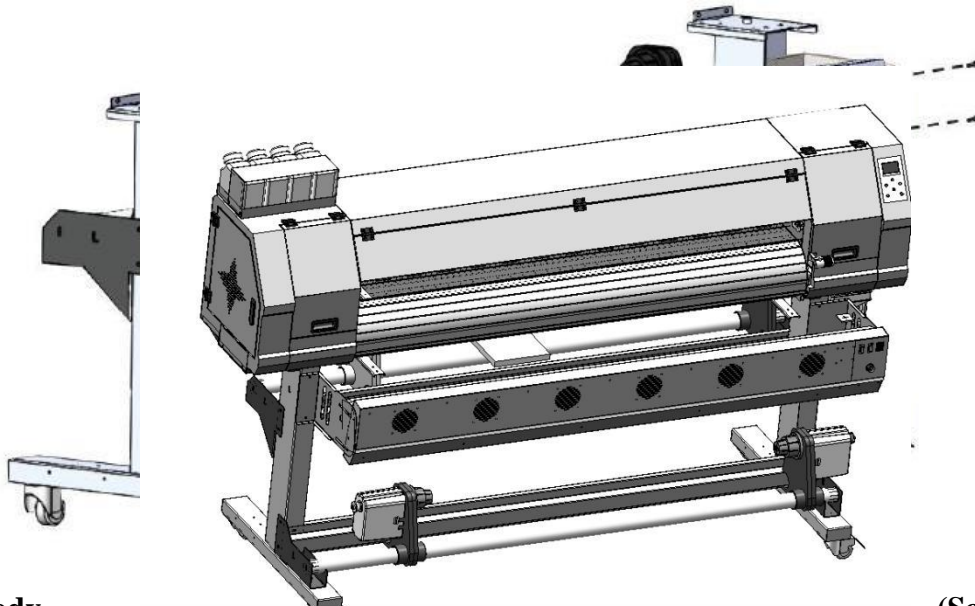
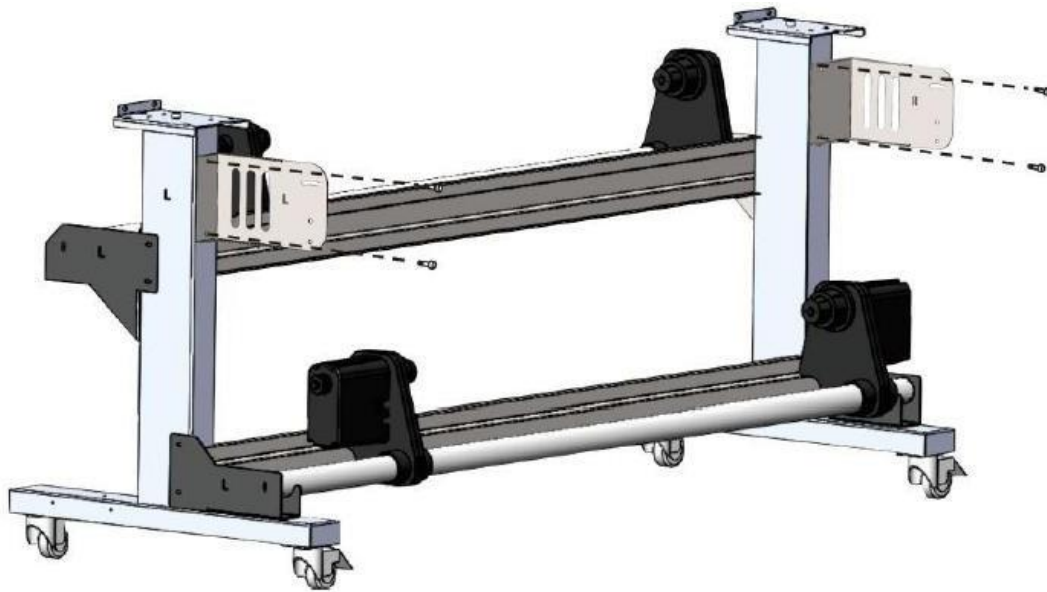
(3) Wheels installation



(4) Feeding and take-up system



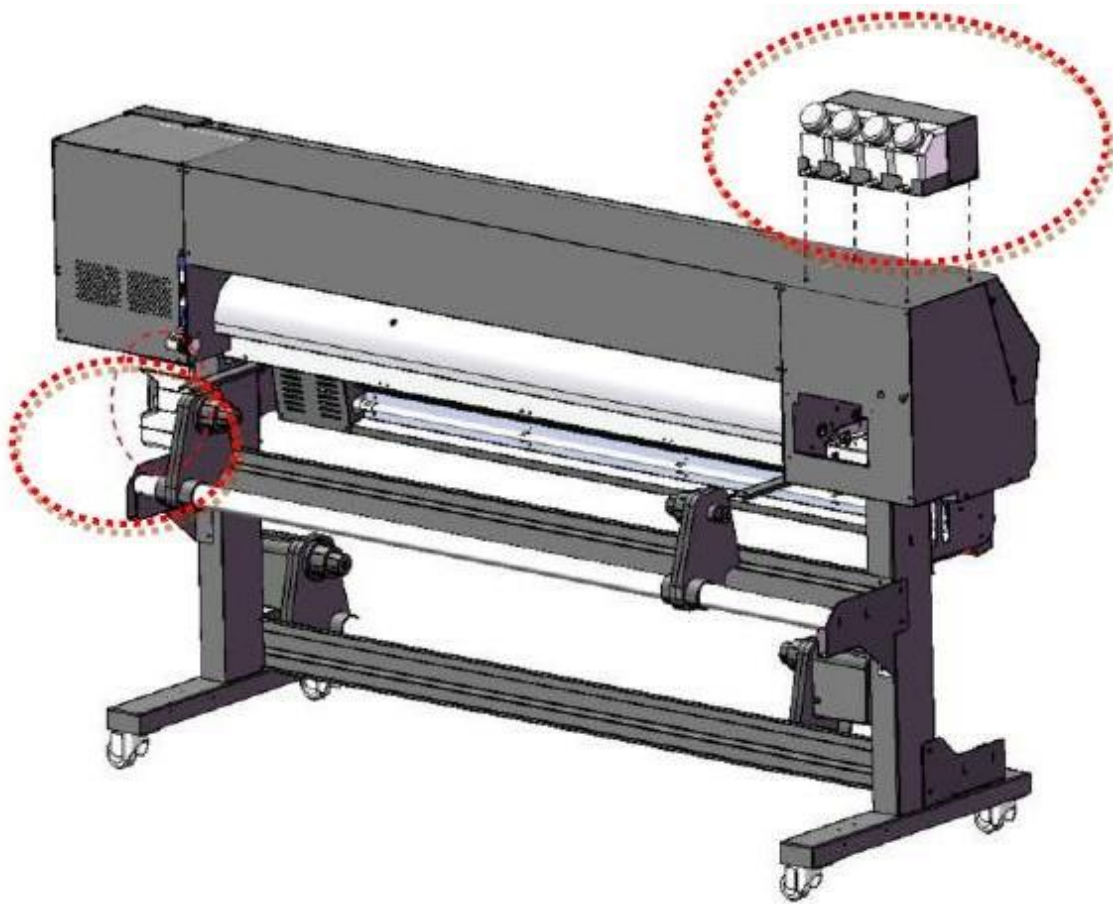
(5) External fans and heater



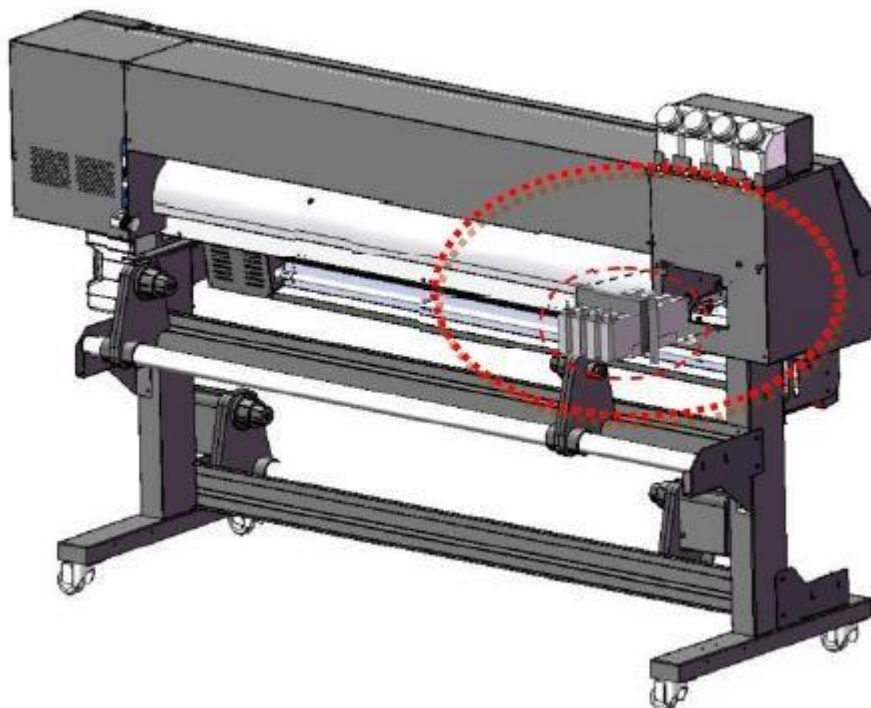
(6) Body

(Screws fix the body)

(7) Ink bottles and Garbage ink bottle

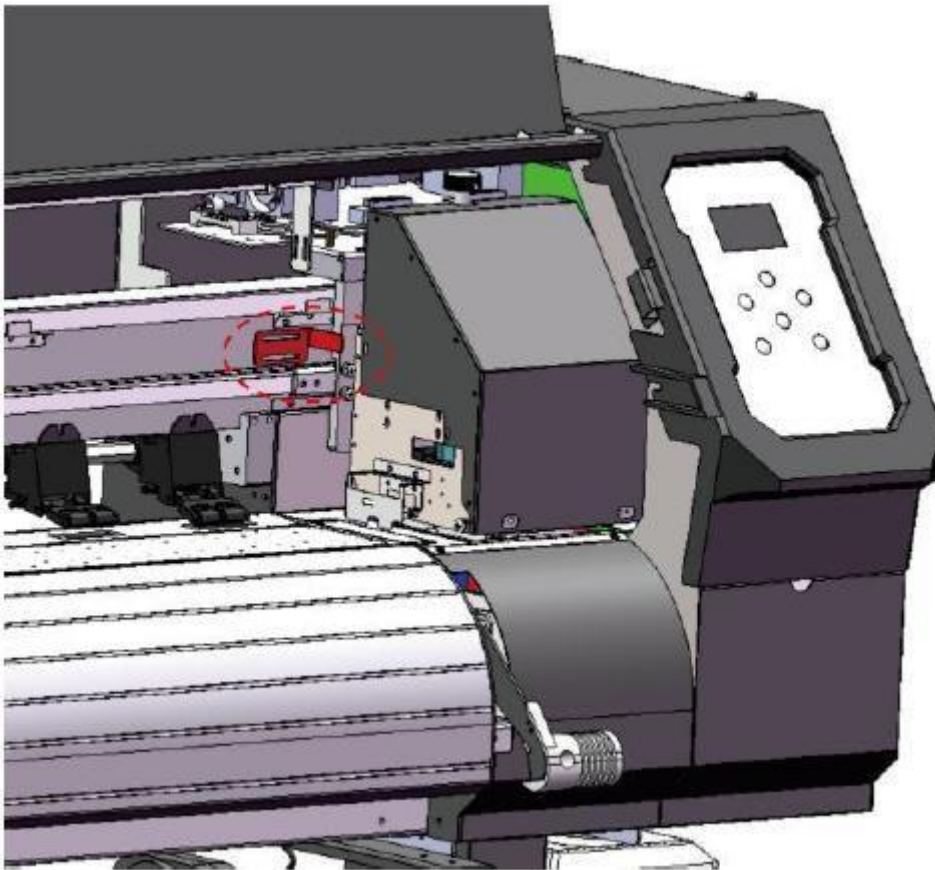


(8) Ink cartridge

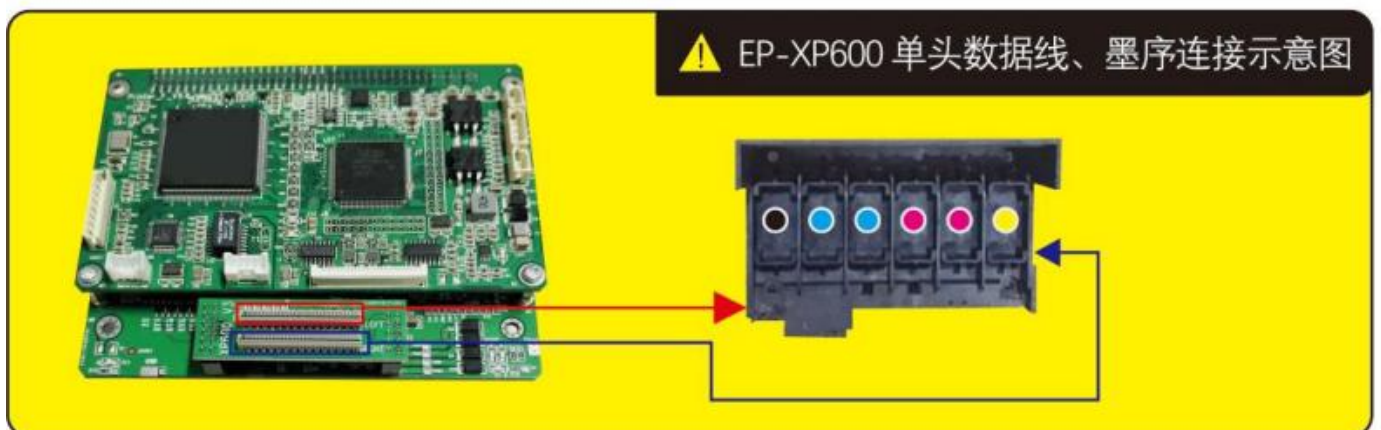


2.2 Head Installation

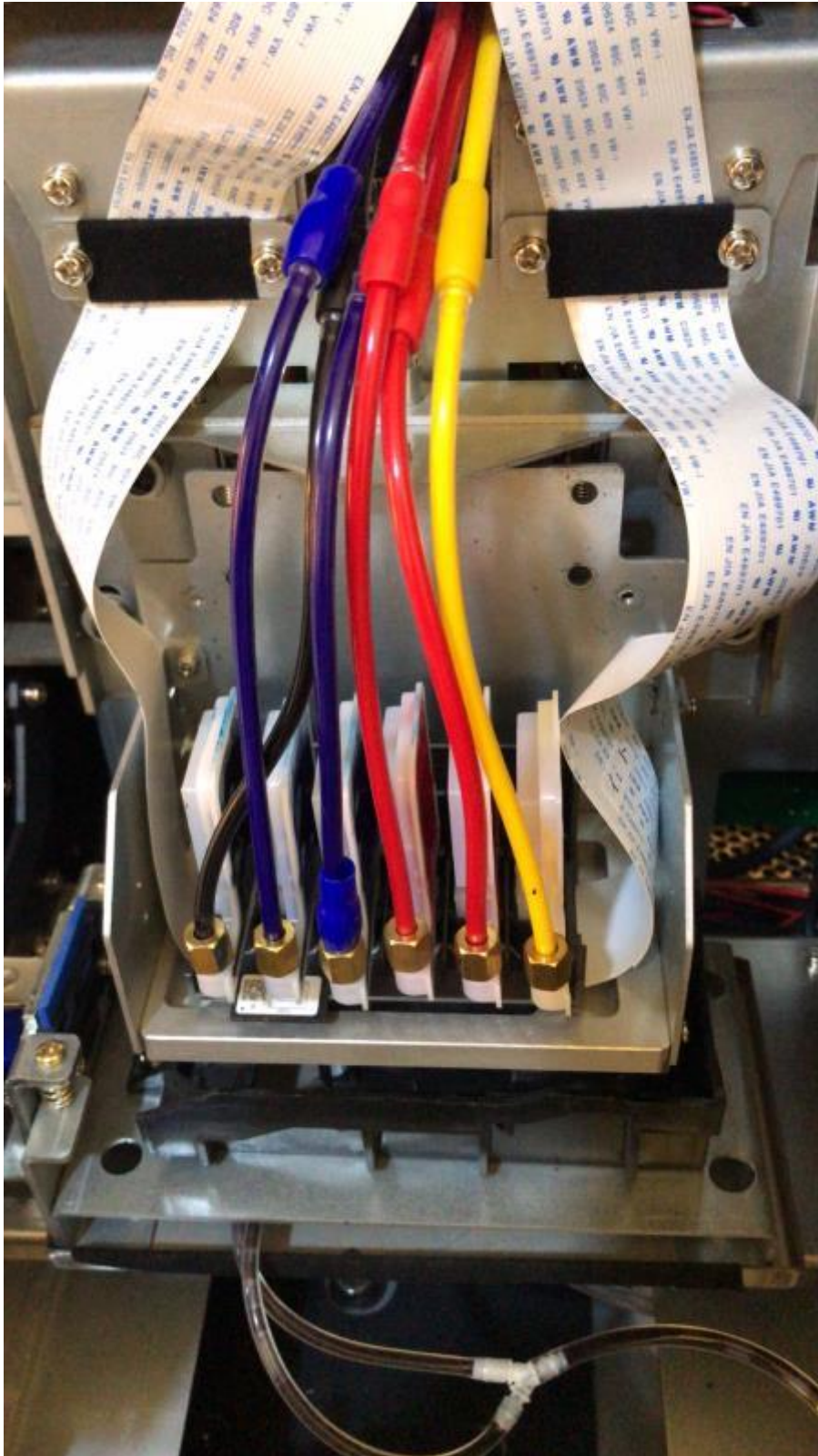
(1) Remove Packing and fasten components



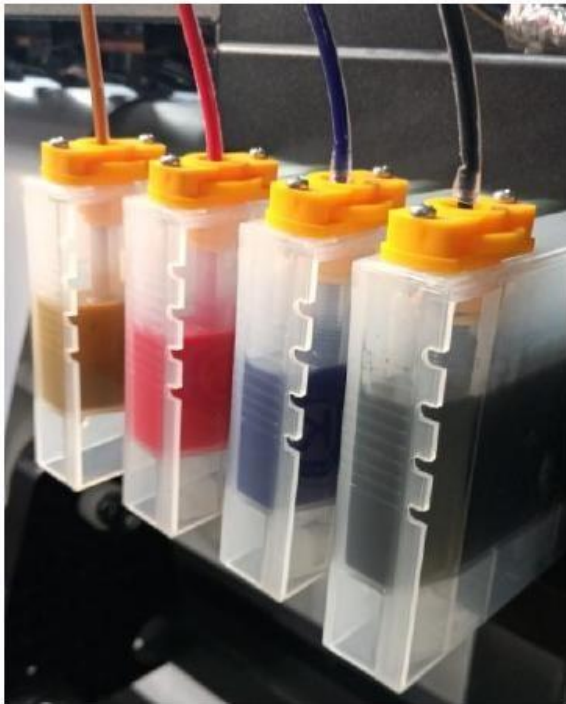
(2) Head cables and ink order connection



(3) Adjust print head height (2mm)



(4) Filling inks to ink bottle

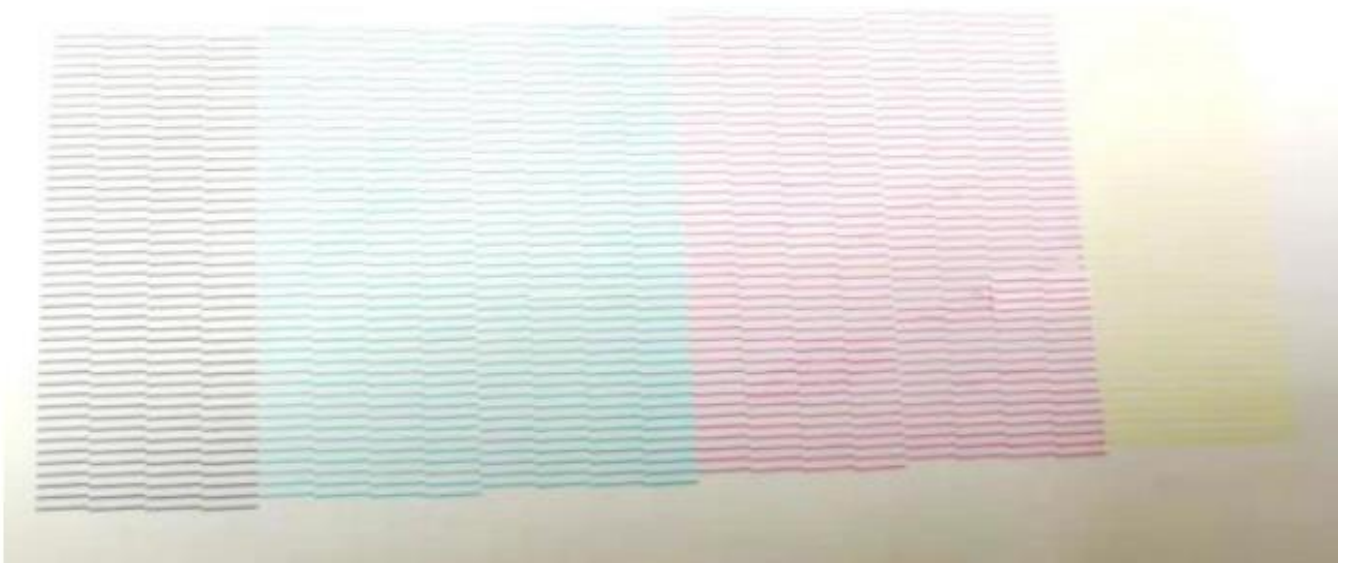


(5) Pump ink (make ink come into printheads)

Menu--- Maintenance ---Inking

(6) Nozzle test (Good nozzle test proved this machine installation have been finished)

Menu----Maintenance ---Nozzle Test



Chapter 3 Computer Setting and Software Installation

Download all installation files via the link you received first. Then

3.1 Starting up

- (1) Power on, as following switch to “—” state

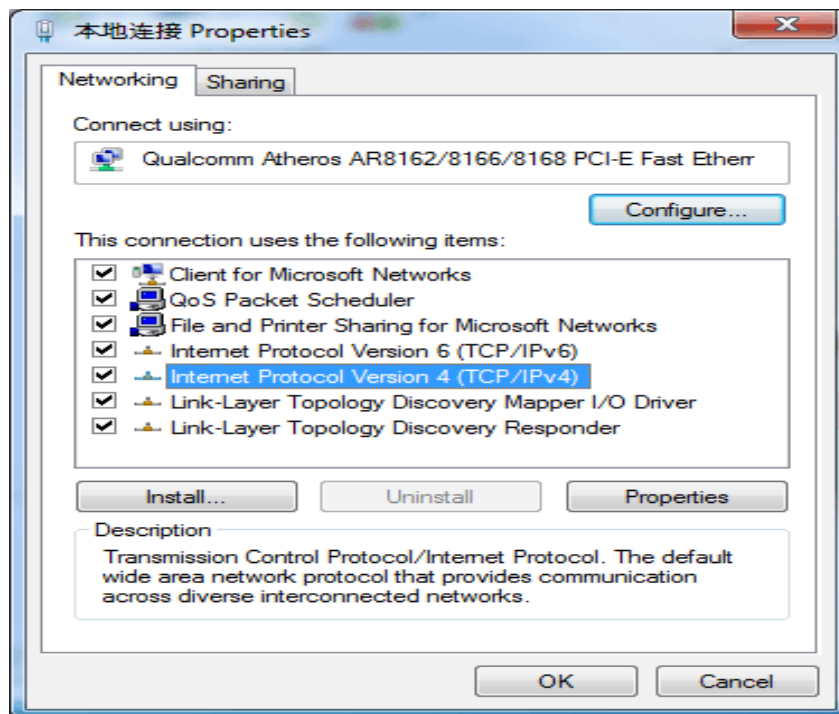


- (2) Power off, switch to “O” position directly

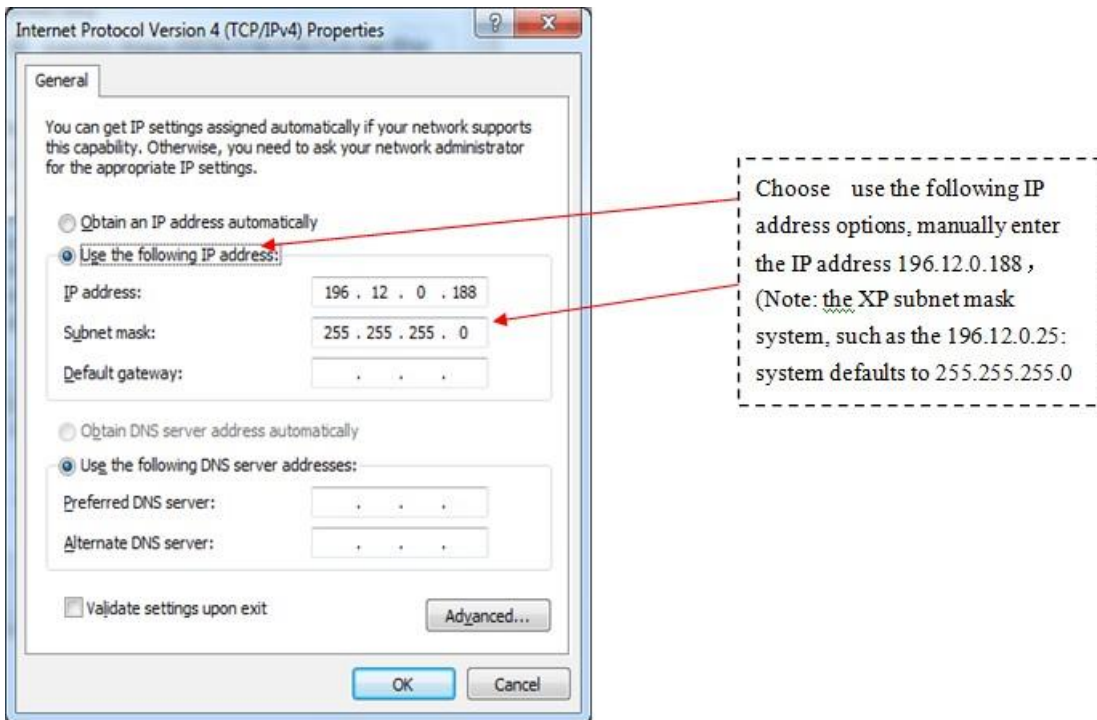
3.2 Computer ID setting

- (1) Set IP from PC.

Right click on the icon in the online neighborhood - > select the local connection, right-click the property to open the interface.

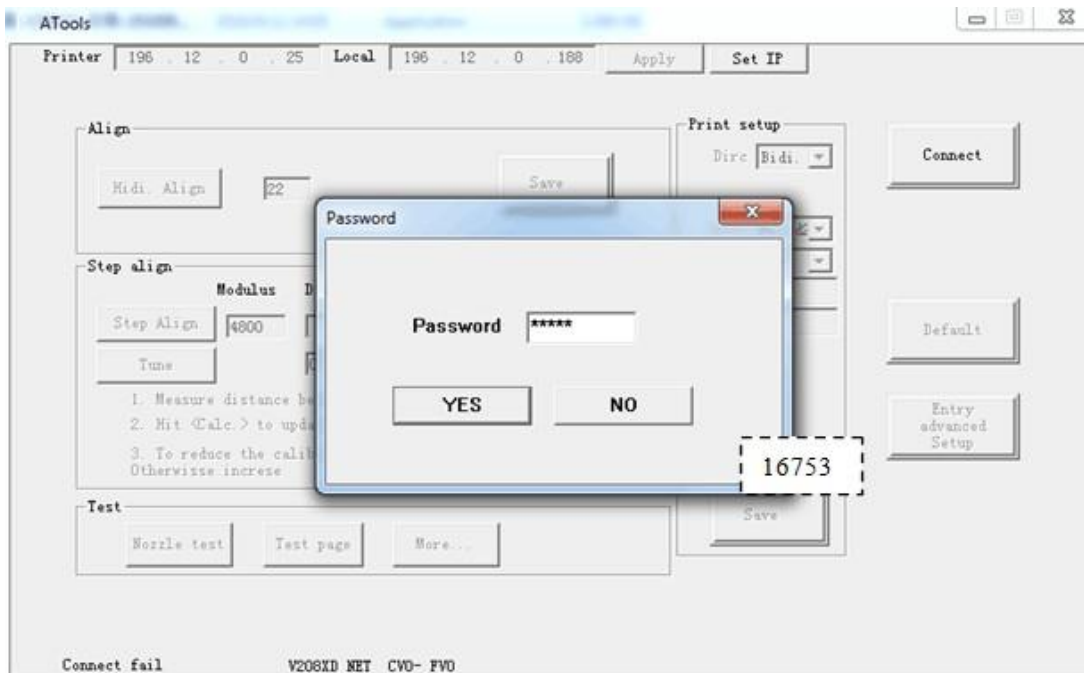


Double click the Internet protocol (TCP/IP) to open the following interface



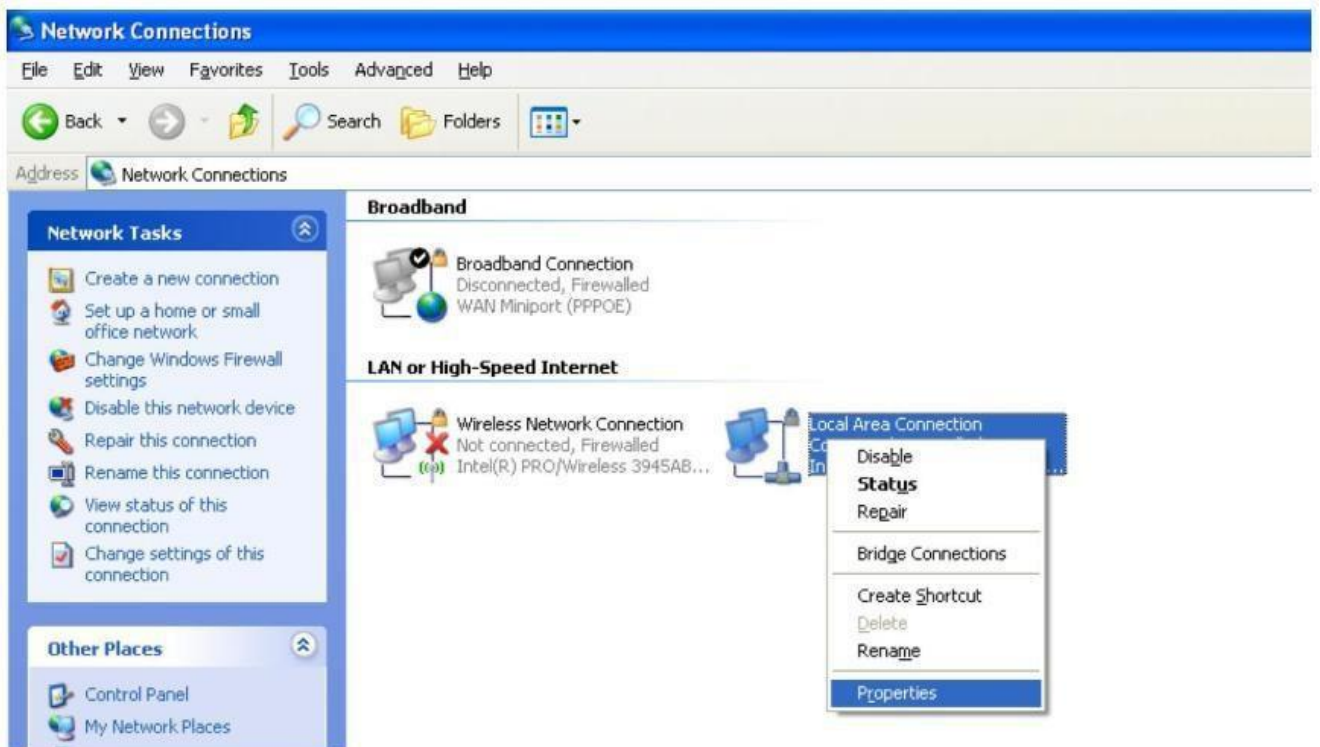
(2) Set IP of calibration tool

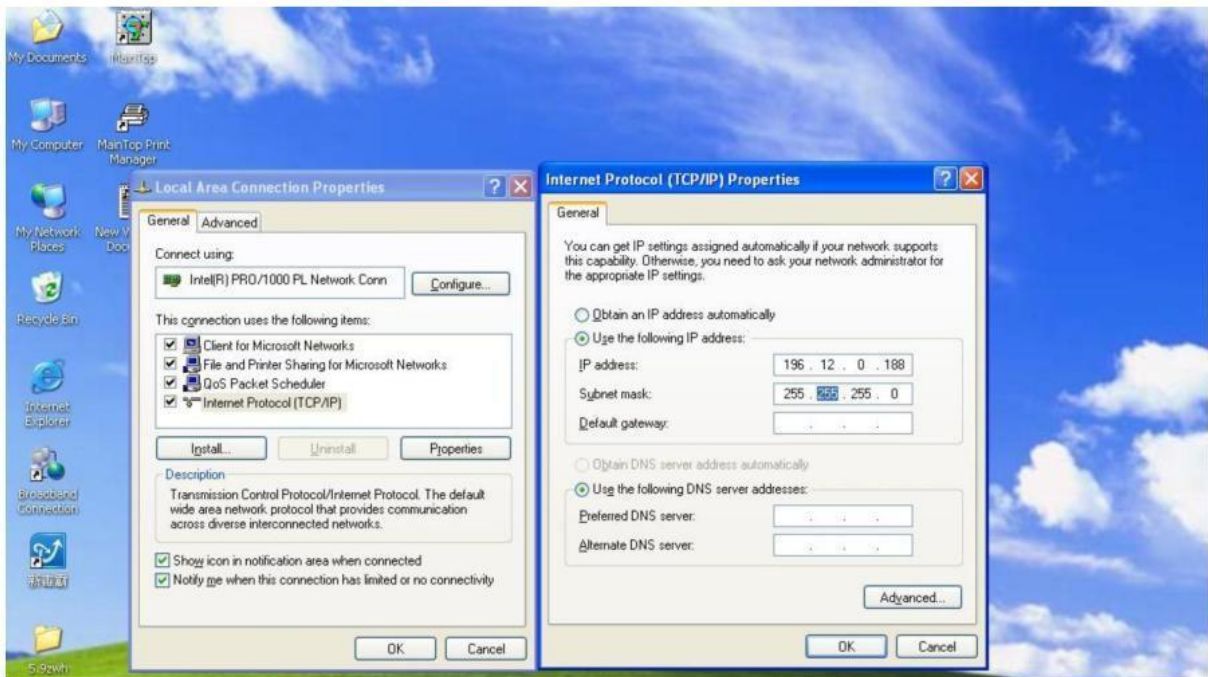
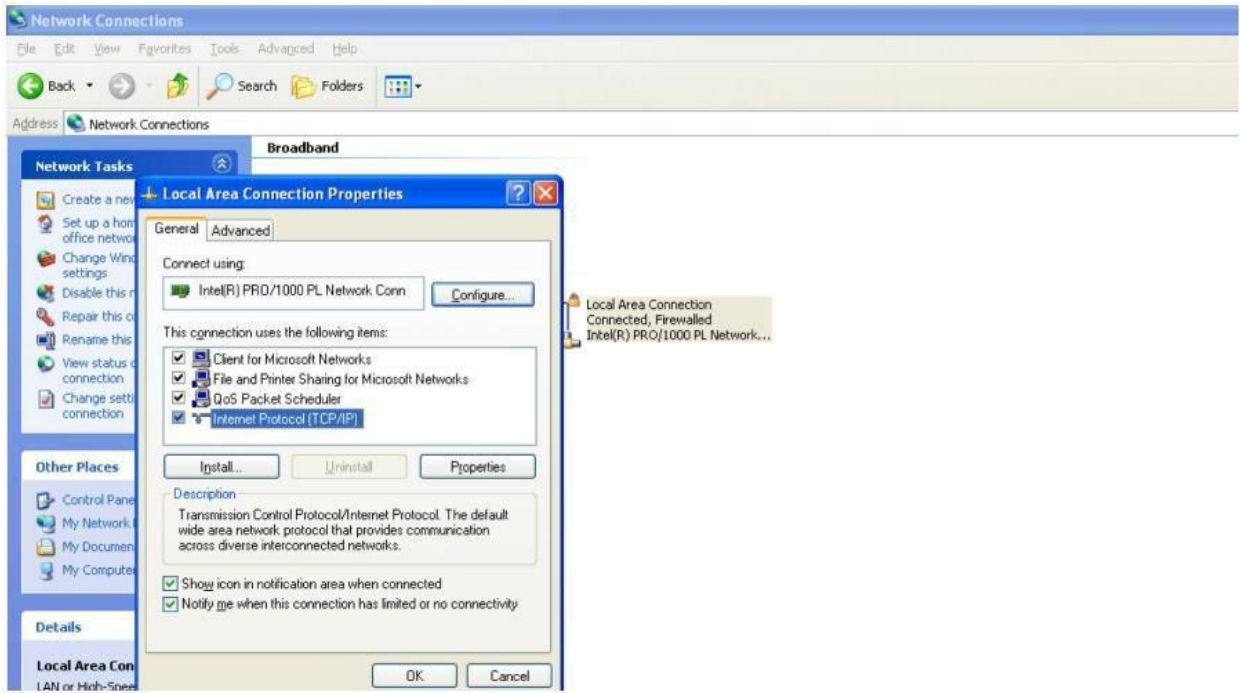
Double click calibration tool



Click "set IP address" button ,will show input password window, enter **16753** digits. Change the printer IP to: 196.12.0.25;Loca IP to: 196.12.0.188. The printer IP address is the default address of the printer, If you set user defined IP address from printer, the printer IP address corresponding to the user defined IP address. After set correct IP , click "apply" button, Connect the printer and computer with network cable, Click the "connect" button, you can use calibration tool to set parameters and operations.

* Computer ID address for reference





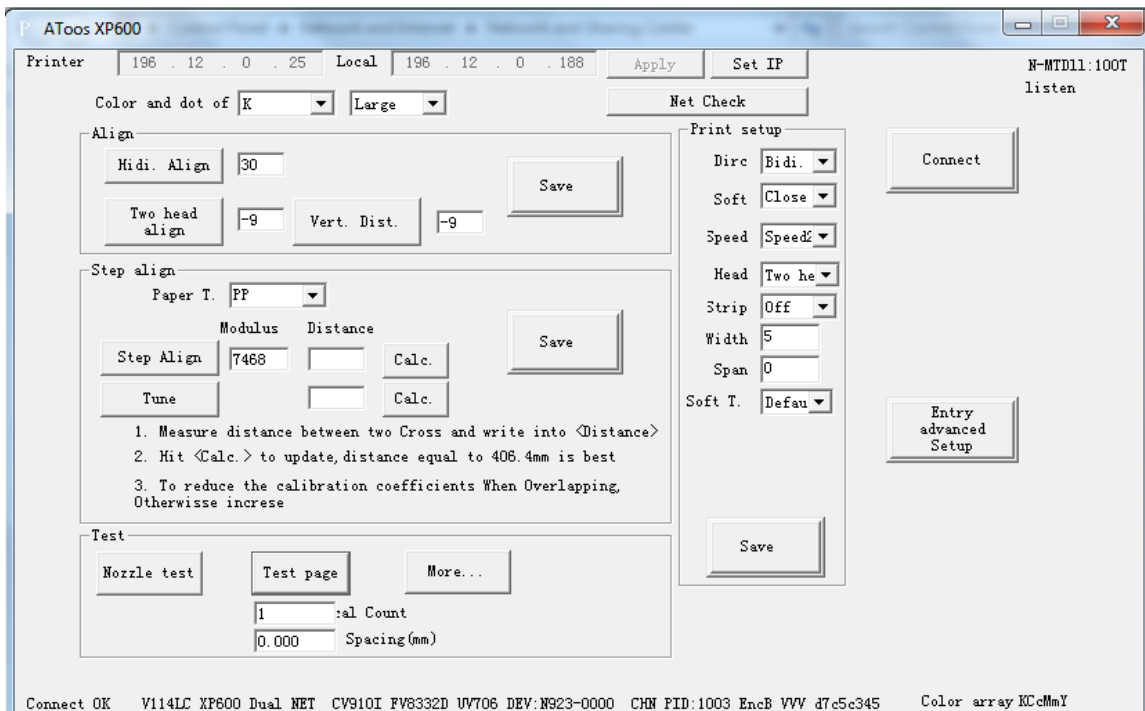
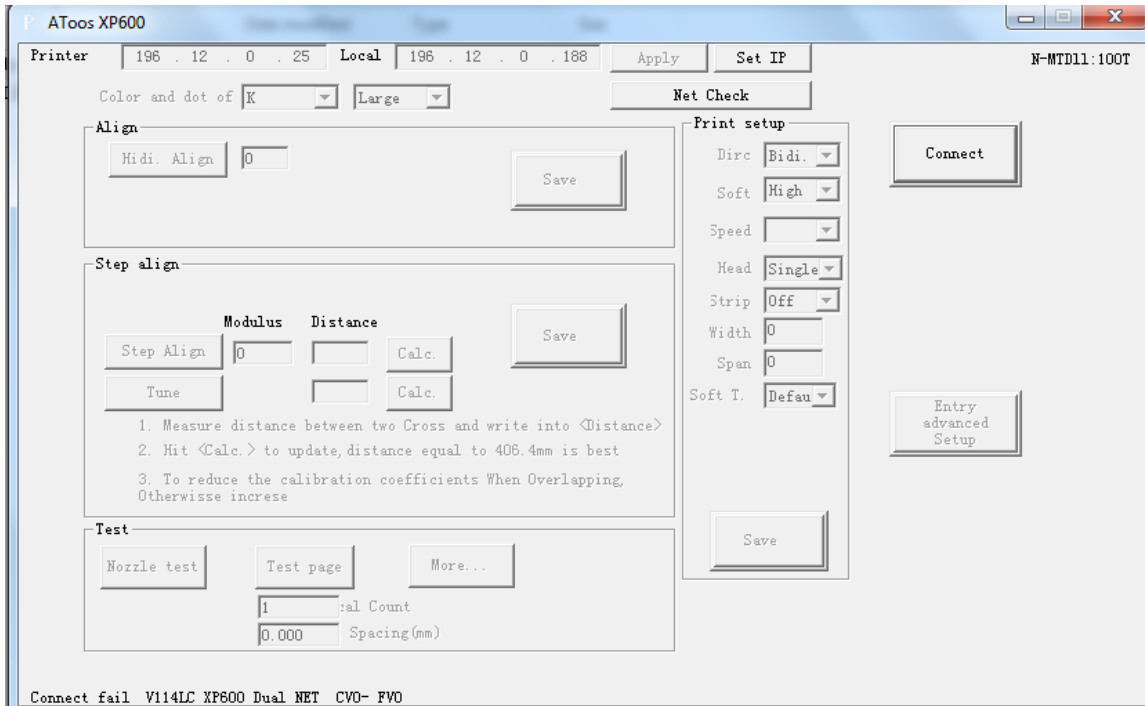
3.3 Connect printer to computer

(1) Open Atool (Calibration tool)

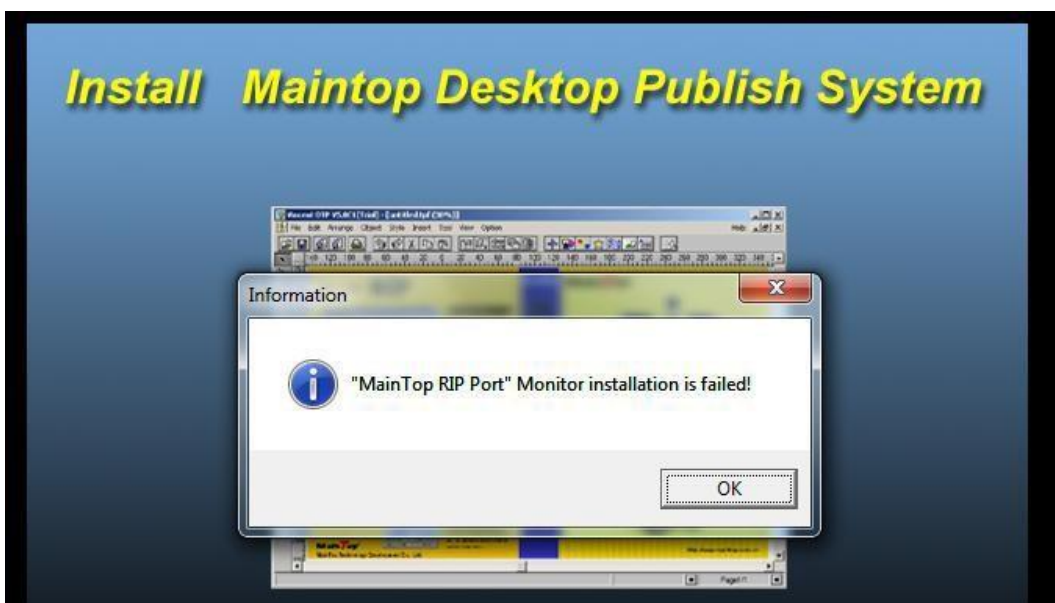
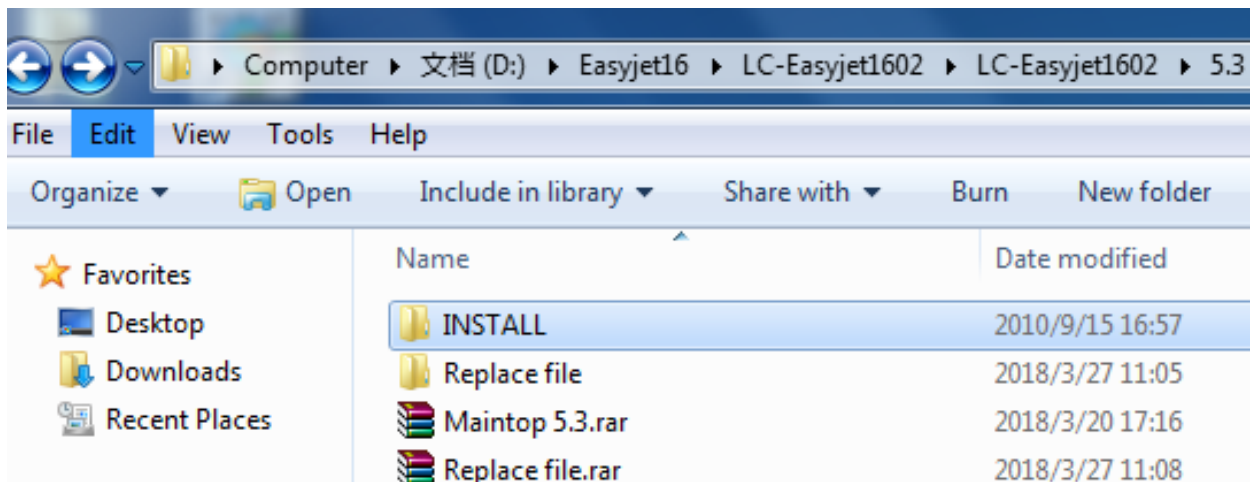
Click “Connect“ button , Connected successful as below :

Printer IP address: 196.12.0.25

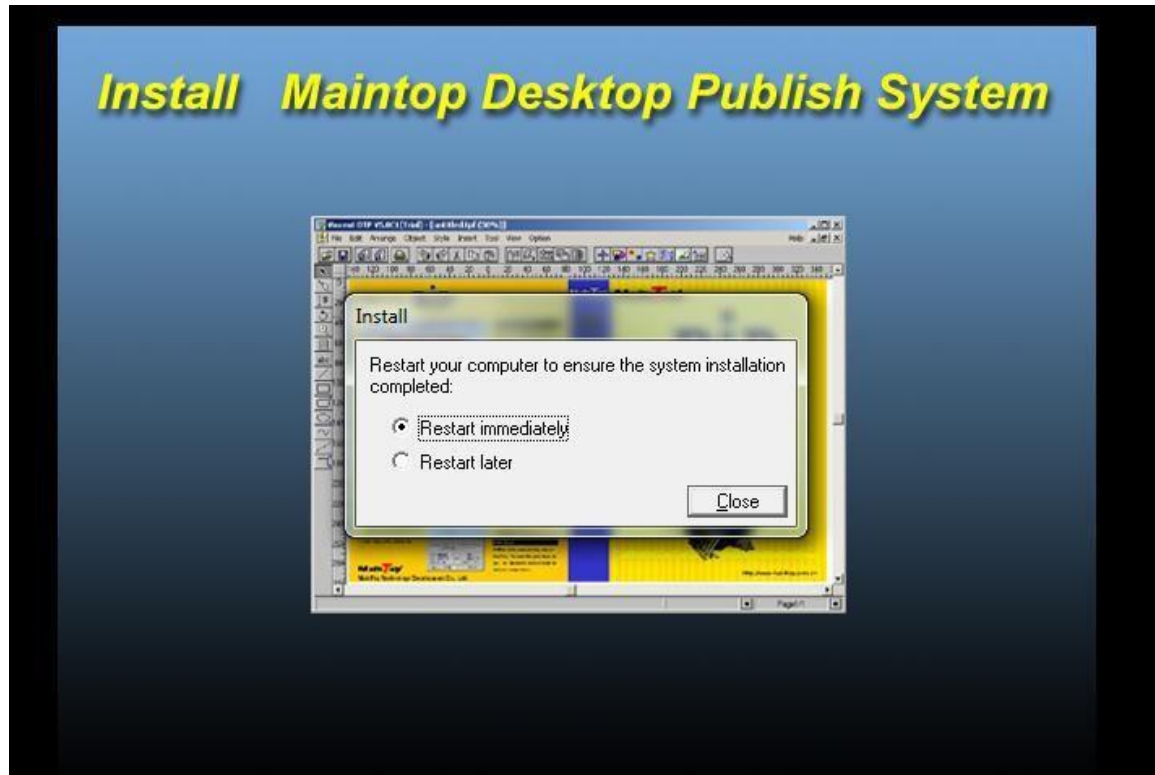
Computer IP address: 196.12.0.188



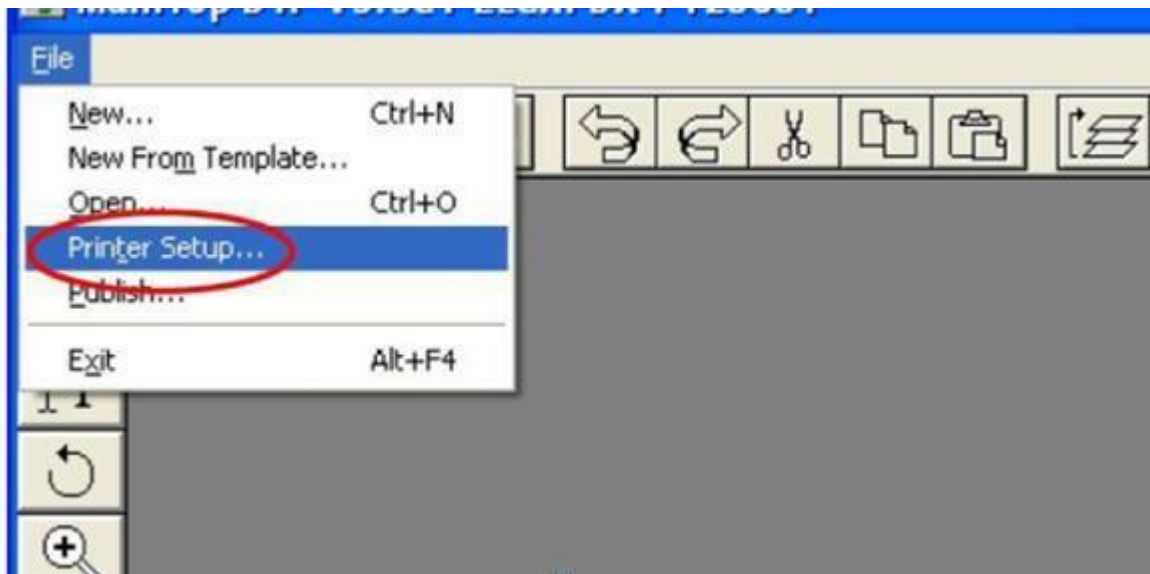
3.4 Maintop Installaton(Rip software)

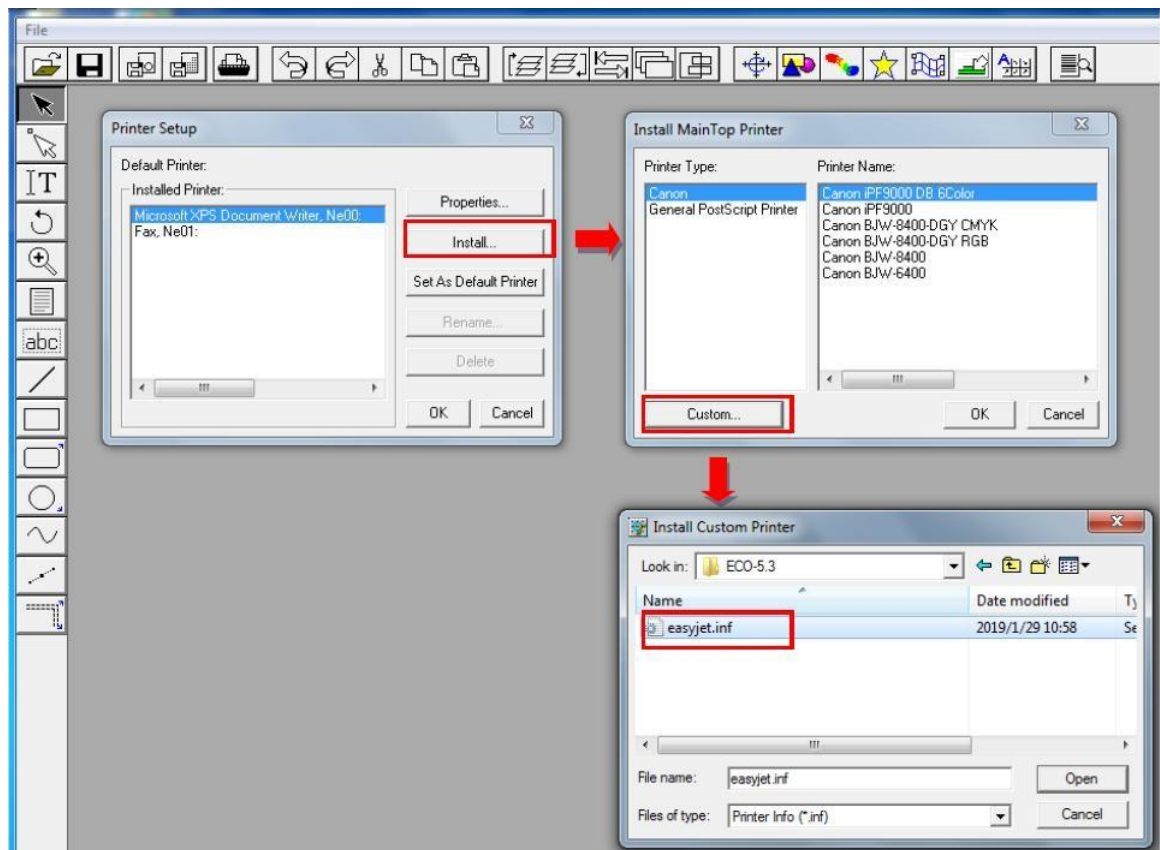
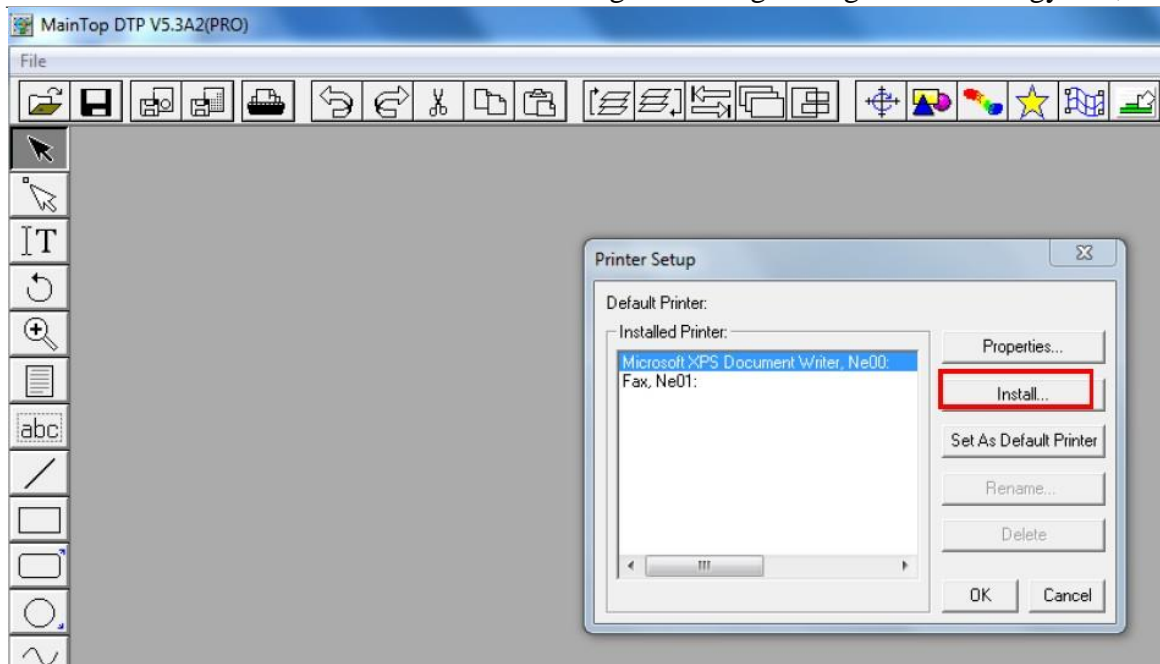


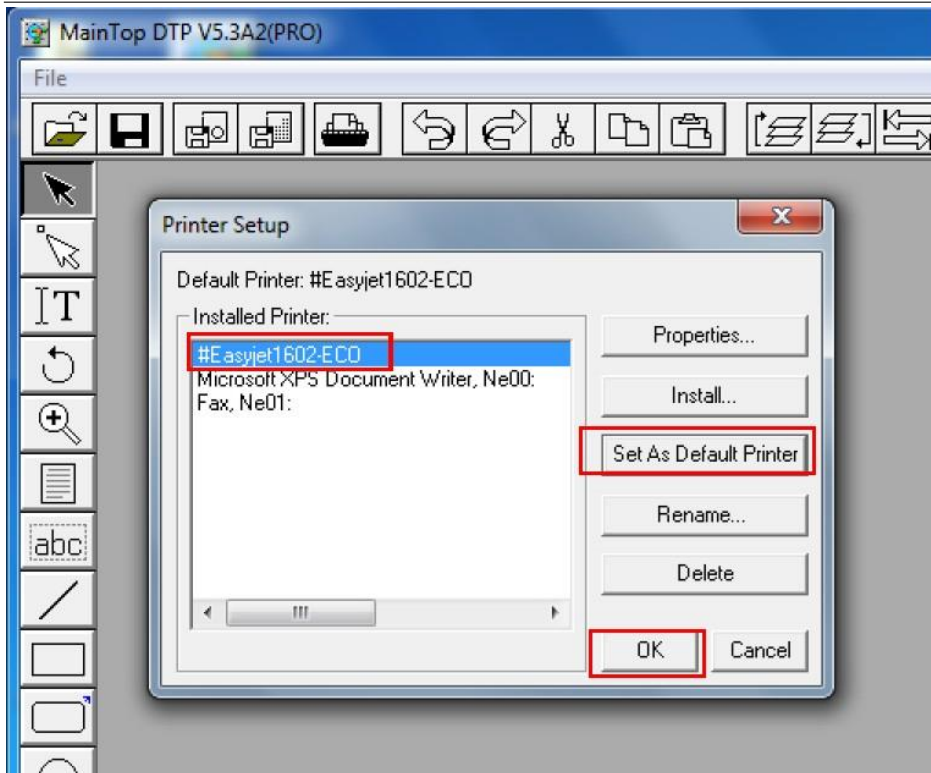
Installation completed, choose restart later.



Open Maintop to install printer driver



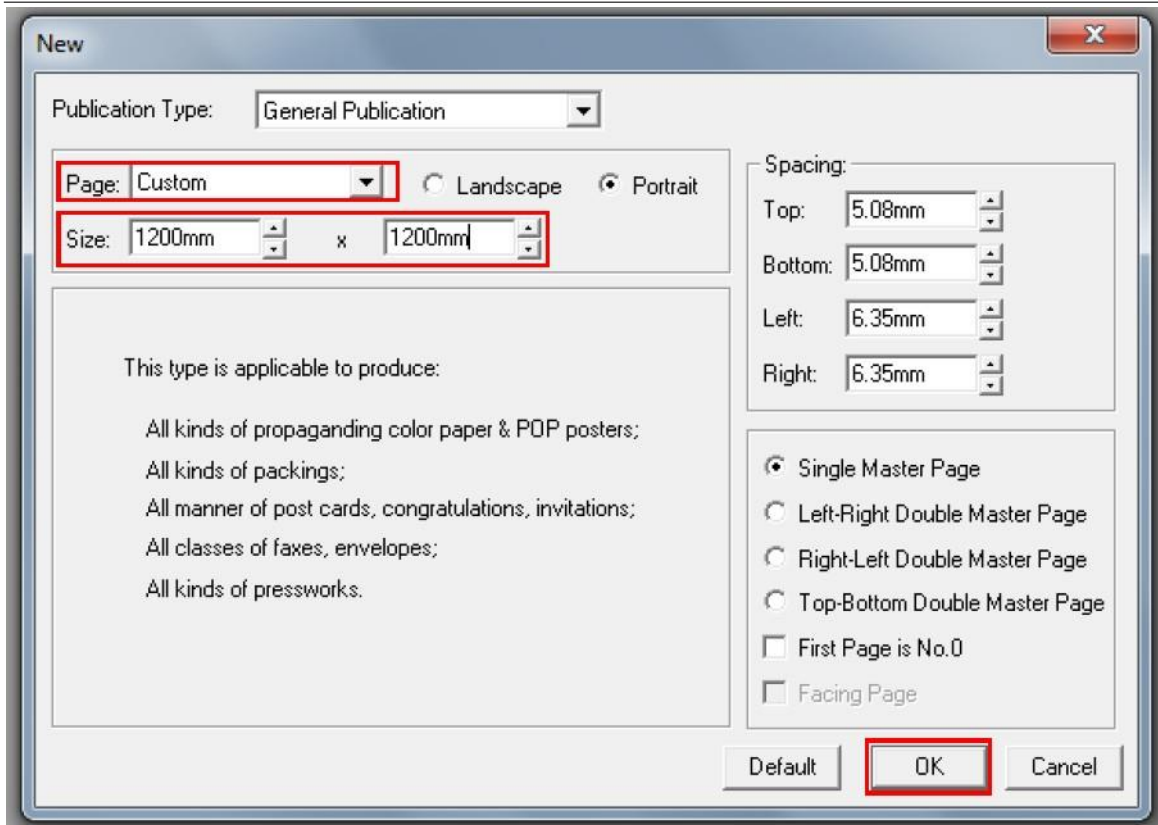


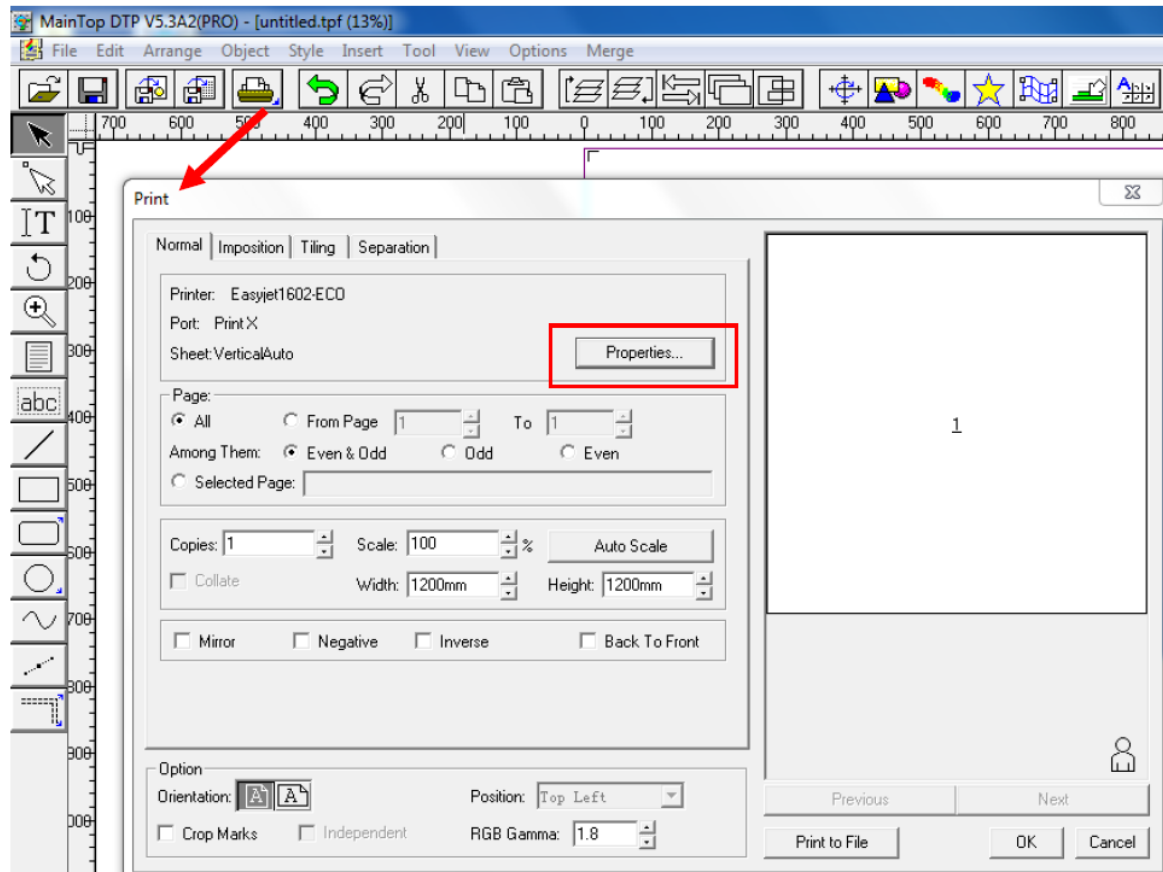
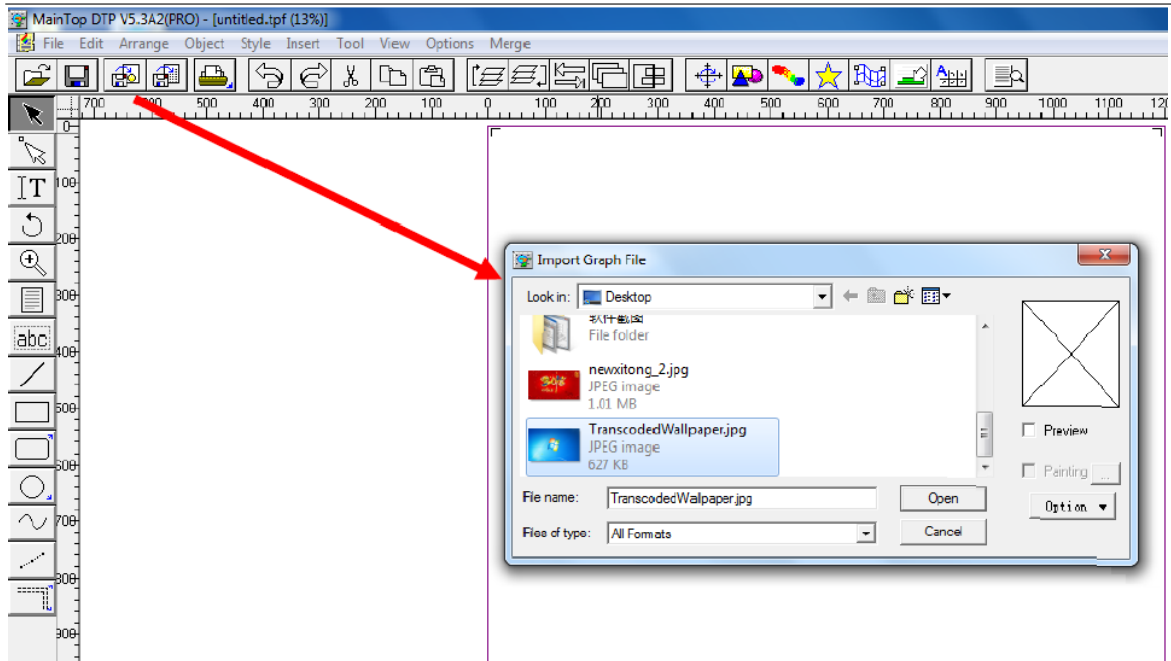


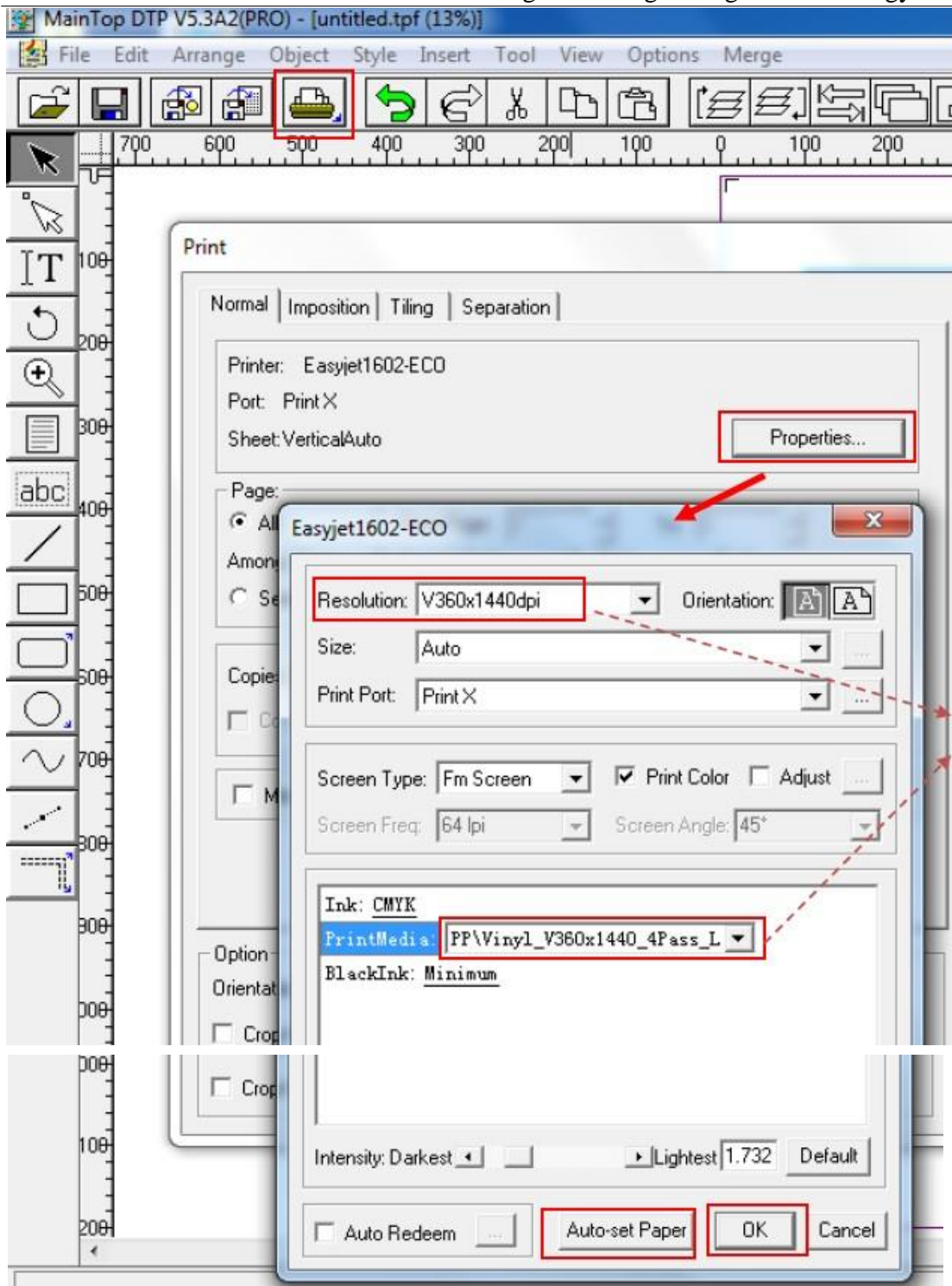
Click "Set as default printer" and "OK"

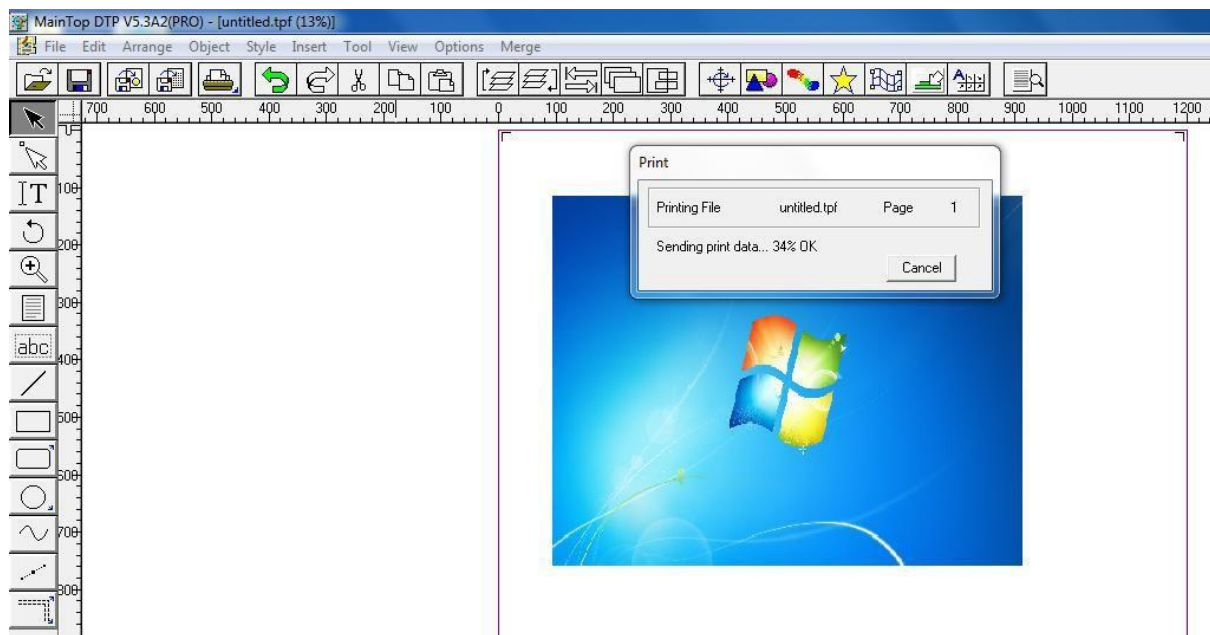
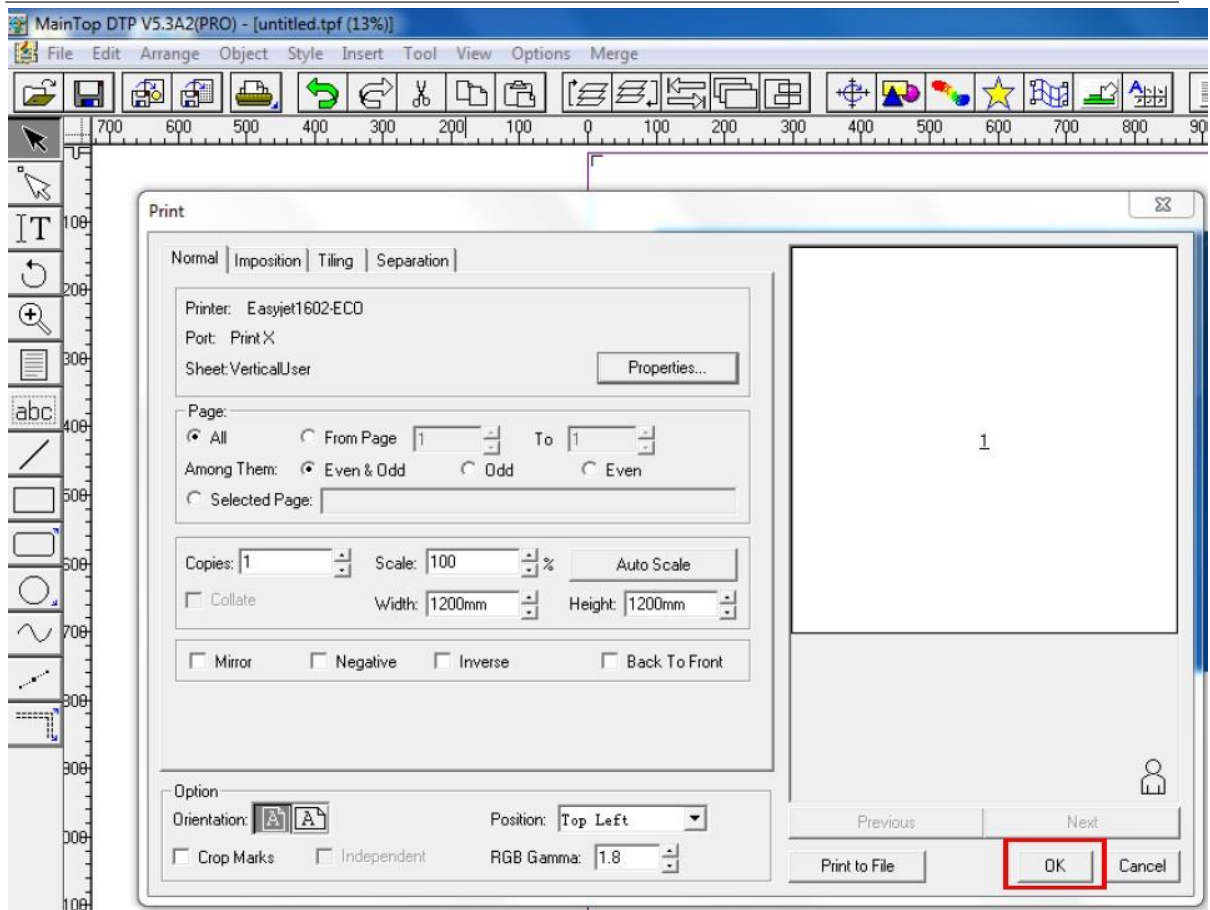
3.5 Maintop Using







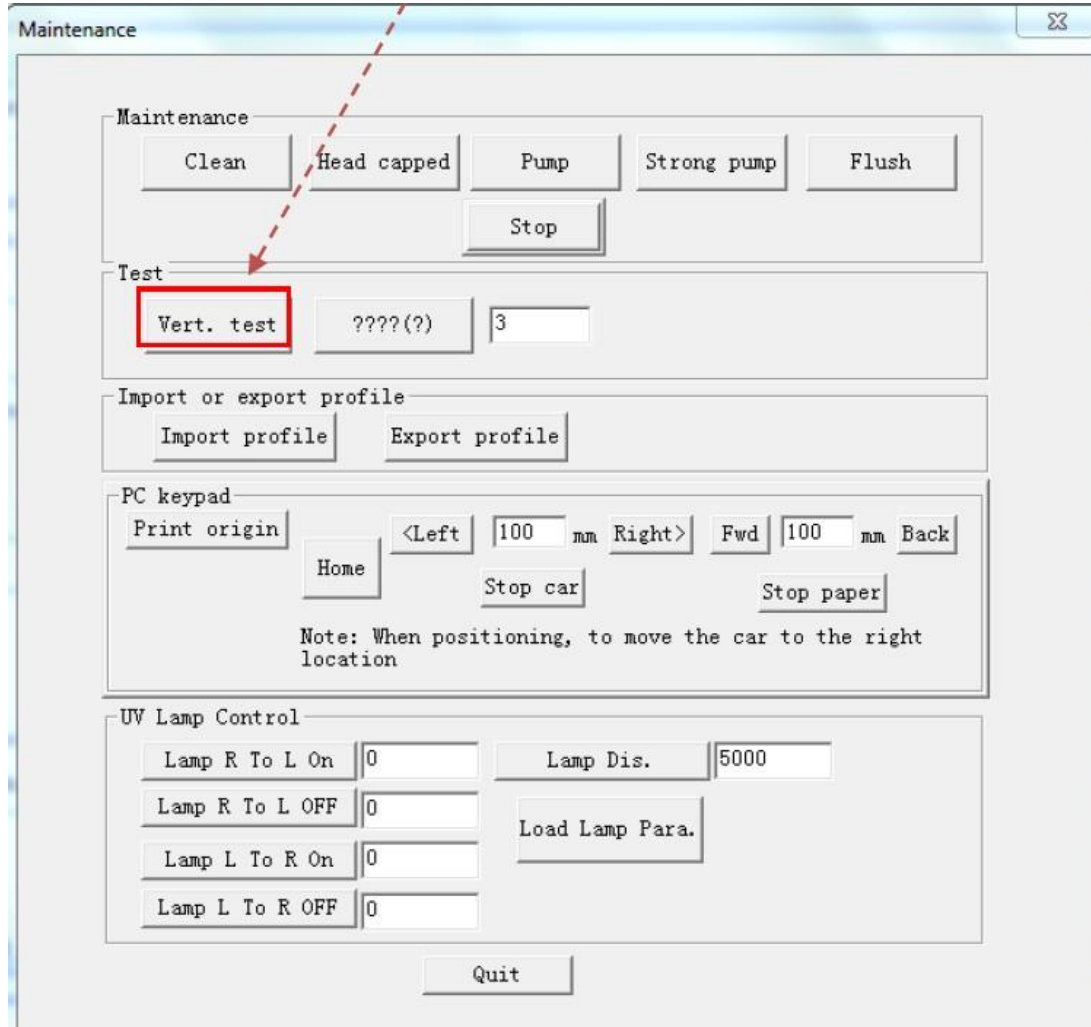
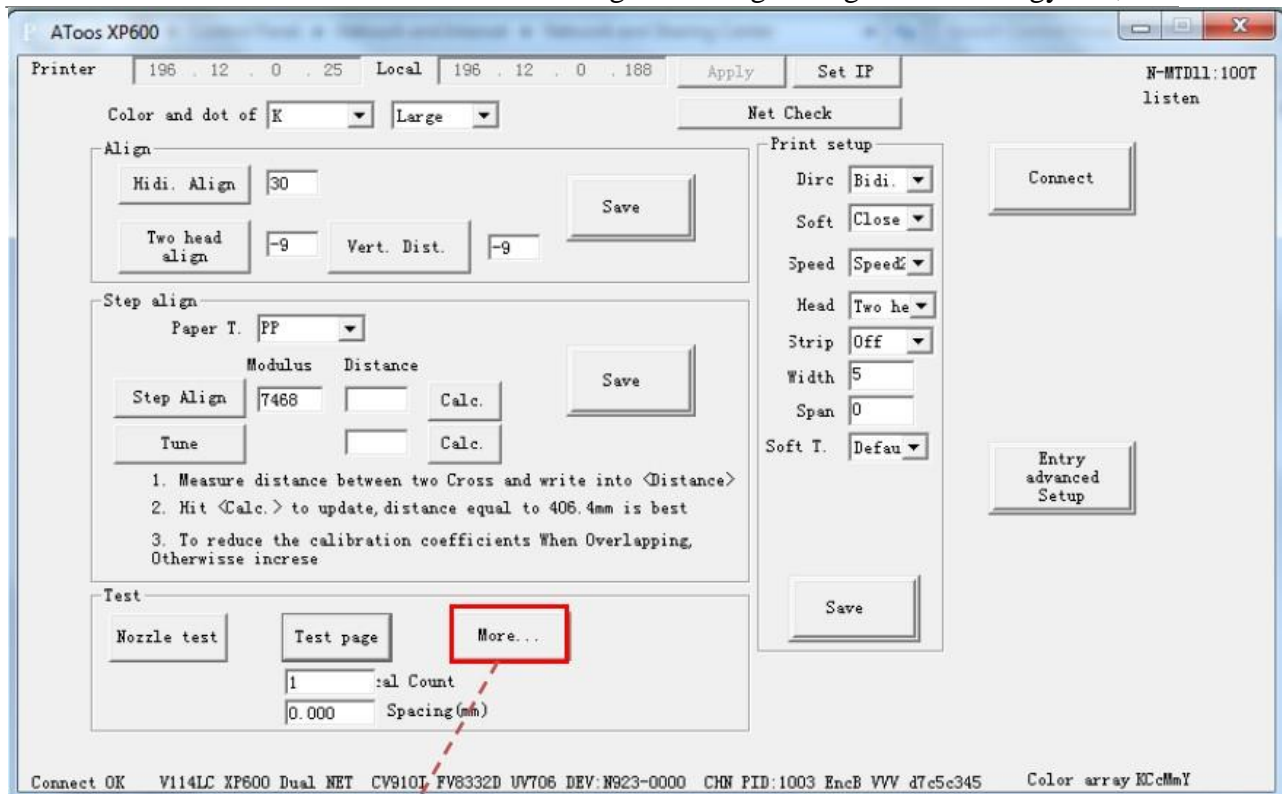


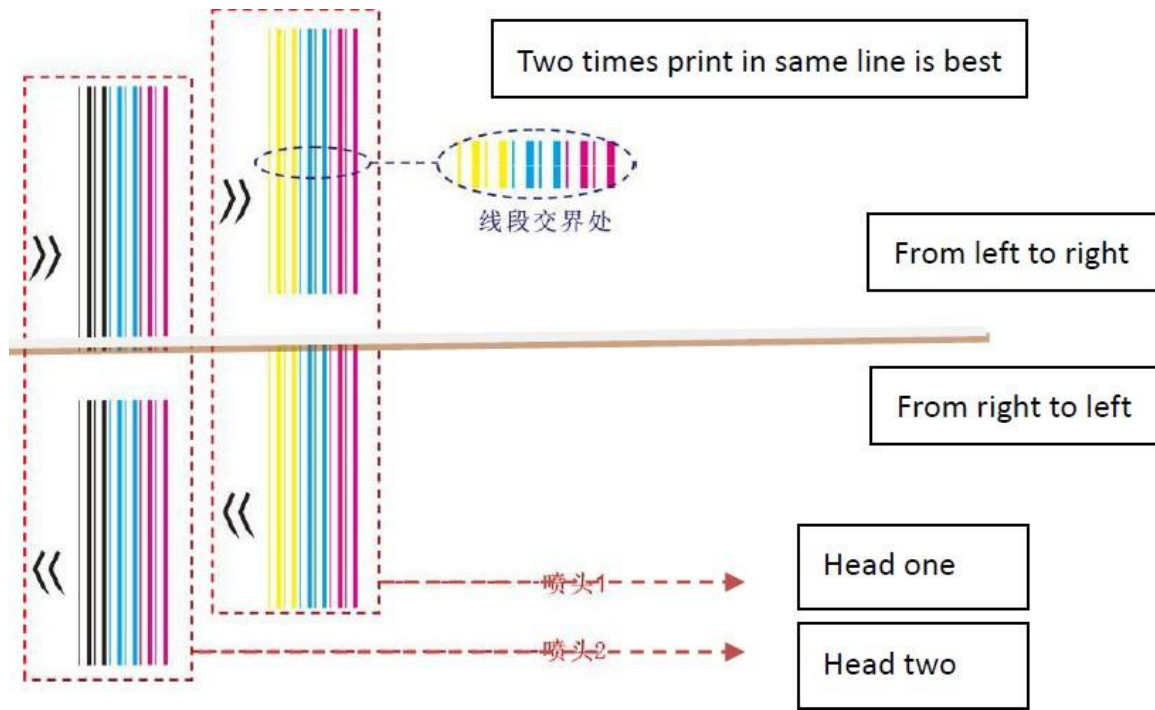


3.6 Calibration

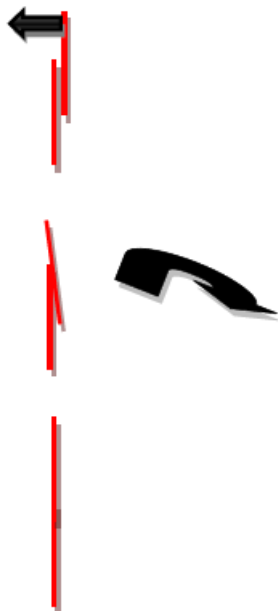
If you want better quality, you have to make calibration, target is making ink drop print in one straight line.

(1) Physical position





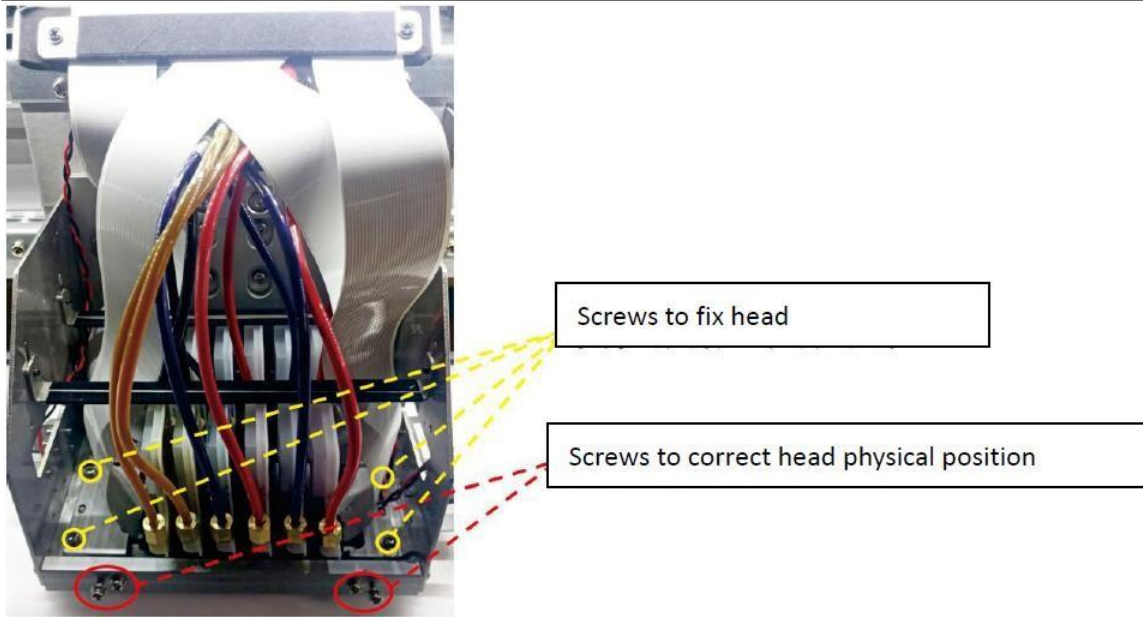
For example



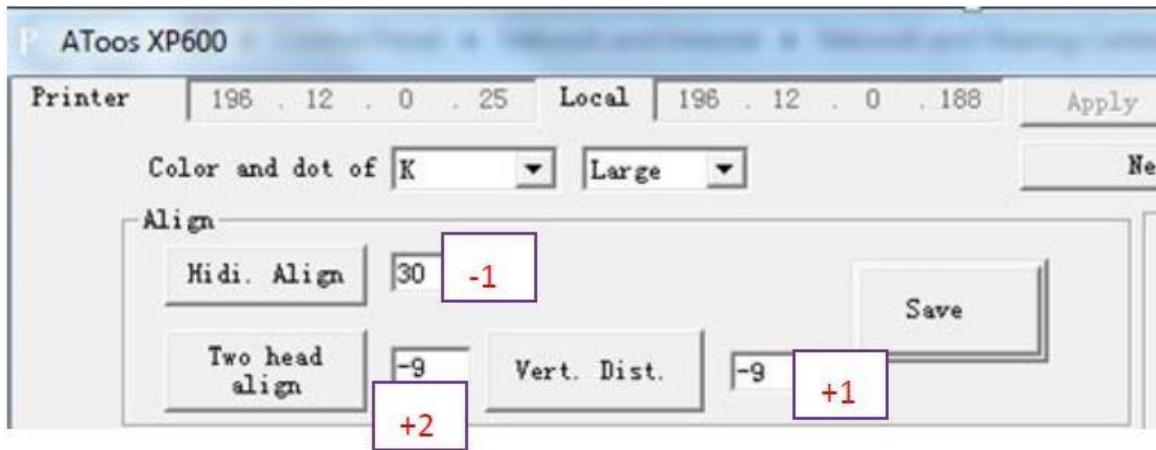
Move head one to left

Correct head one to straight

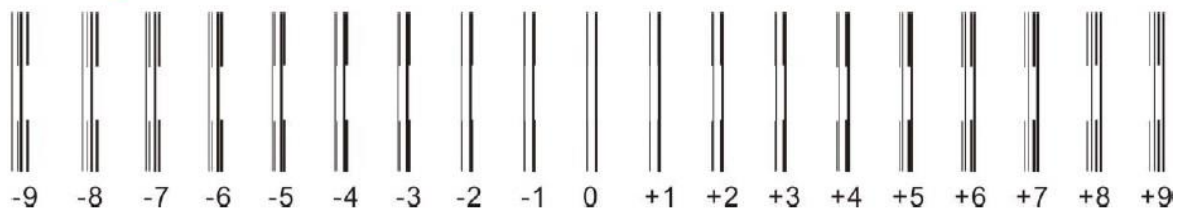
Perfect



(2) Alignment

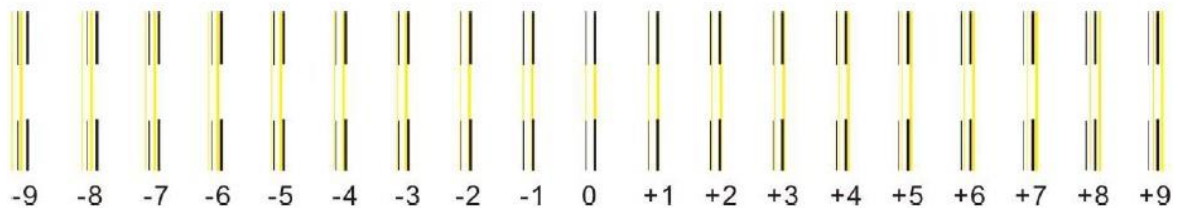


A: Hidi.Align



Such as “-1 is best straight” so : Bir-direction 30-1=29 Fill 29 in this blank . Then print again until “The best is 0”

B. Two head align



Such as “+2 is best streight” so : -9+2=-7 Fill -7 in this blank . Then print again until “The best is 0”

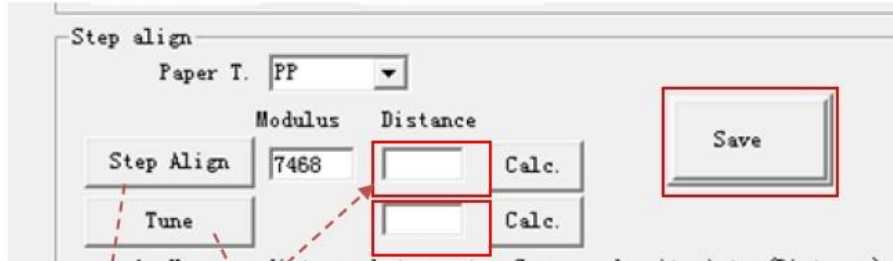
C. Vert. Dist'

-5 -4 -3 -2 -1 0 +1 +2 +3 +4 +5 -5 -4 -3 -2 -1 0 +1 +2 +3 +4 +5

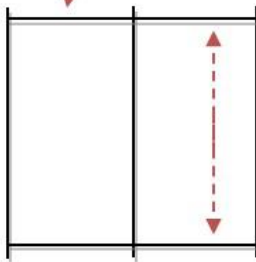
Such as "+1 is best streight" so : -9+1=-8 Fill -8 in this blank . Then print again until "The best is 0"

D. Step Align

Click "Step Align" and "Tune" to step Align



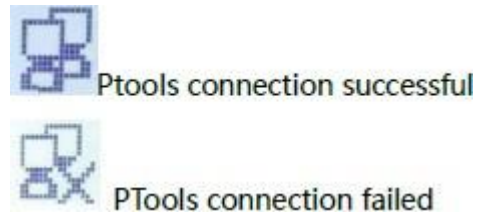
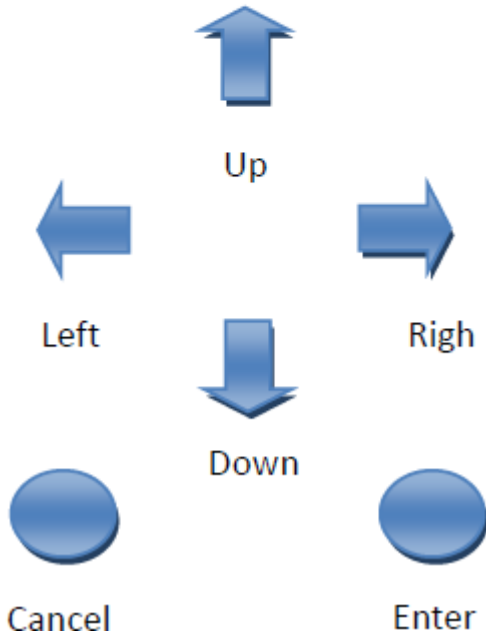
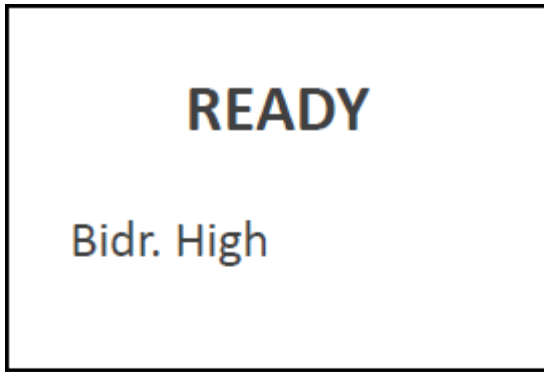
Test distance
and input
here



More precision step
Input number here and
then click **Calc.**

+7 +6 +5 +4 +3 +2 +1 0 -1 -2 -3 -4 -5 -6 -7

3.7 Menu Introduction



Menu**Setup Menu**

1) Print setup

--Dir : Unidir / Bidir

--Speed: Std. / High

--Heat setup: L Head / R Head / Two Head

2) Fan Setup: 12 +-

3) LCD Contrast : 8+-

4) Auto Clean: Off / 8H / 3H / 1H / 0.5H

5) Device Address: password : **Engineer input**

6) Warn Paper: On / Off

7) Station Setup

--Station POS : Left / Right

--Spurt POS: Left / Right

--Wipe POS: Left / Right

--Wiper POS: Type no setting

--Wiper Hight: Left / Right & F / B

--Car Hight: Left / Right & F / B

8) Heat Setup

Front Heat set: Close / Open

Maintenance

1) Nozzle Test

2) Clean Nozzle : Two head / L Head / R Head

3) Manual Clean: Two head / L Head / R Head

4) Wiper Nozzle: Two head / L Head / R Head

5) Flush; Flushing

6) Cap Head: Capping head

7) Inking; Inking

Dev.Mgr**Restore Default**

Language: Chinese / English

Delivery set: 3000+ _

Heat Module:

-F 38℃

-M 38℃

-B 38℃

-R 38℃